

#ASPO2024

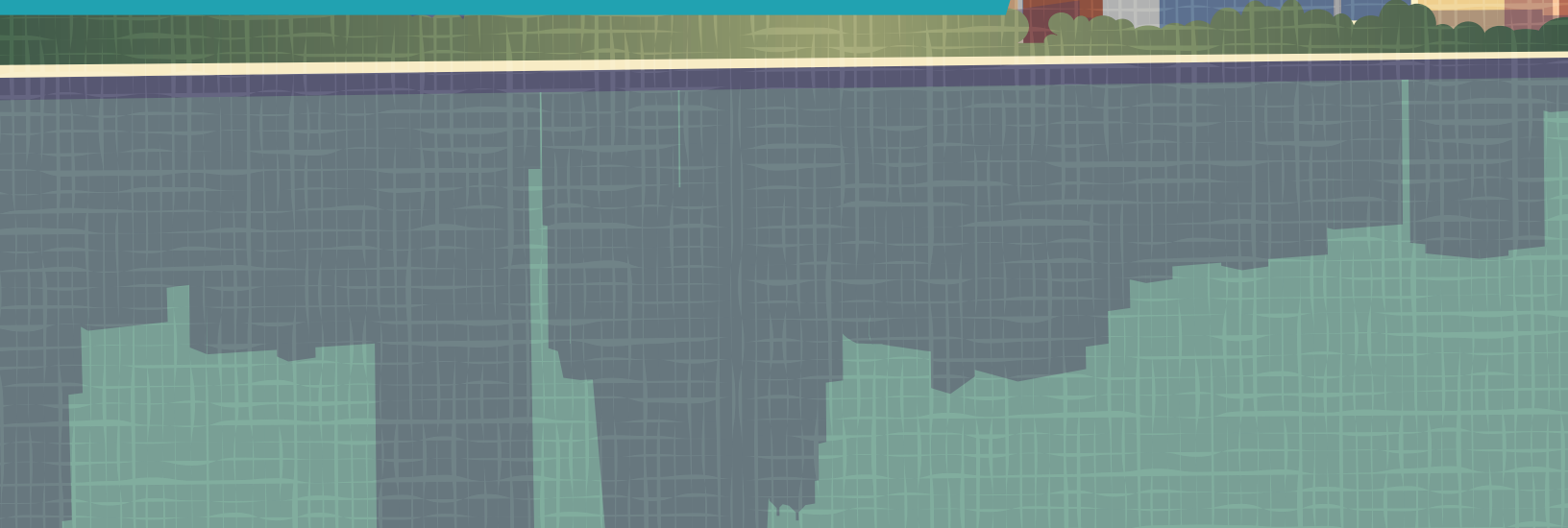
AS
PO

48th Annual Meeting

March 17-19, 2024

Swissôtel Chicago

Conference Program



Annual Meeting Supporters

ASPO is grateful for the support of the following:

CHAMPION

The James



THE OHIO STATE UNIVERSITY
COMPREHENSIVE CANCER CENTER

RUTGERS

Cancer Institute
of New Jersey

RUTGERS HEALTH



PennState
Cancer Institute



AT THE FOREFRONT

UChicago Medicine

Comprehensive Cancer Center



Sidney Kimmel Cancer Center
Jefferson Health® | NCI – designated

BENEFACTOR

Johnson
& Johnson



UNIVERSITY OF ILLINOIS
CANCER CENTER

ADVOCATE



ROBERT H. LURIE
COMPREHENSIVE CANCER CENTER
OF NORTHWESTERN UNIVERSITY

SUPPORTER



Dear attendees, guests, and colleagues – welcome!

It is my pleasure to welcome you to the 48th ASPO annual meeting. Whether you are attending this meeting for the first time or are a recurring attendee, I would like to thank you for joining us for this incredible opportunity to learn and share with each other. We promise to make it worth your while. The meeting creates opportunities for interaction, collaboration, and networking. During the next few days, I encourage you to make contacts and forge connections. Please feel free to reach out to me if I may be of assistance in this endeavor.

The Program co-chairs, Amy Leader and Cheryl Thompson, along with the Program Committee and Special Interest Group chairs have outdone themselves. Yamilé Molina and her team have made two pre-conference workshops popular. The enduring and highly valued Associate Director/Program Leader Workshop is made possible via Electra Paskett's energetic leadership. The ASPO event would also not be possible without the outstanding efforts of our presenters and the fantastic work of HollandParlette staff Billi Carson, Stephanie Garwood, and Brenna Lechner. This event is also made possible through the support of NCI, sponsors, exhibitors, advertisers, and institutional supporters. On behalf of ASPO, I would like to extend a hearty thank you to each of them for their commitment and investing their energy, creativity, and resources to provide a stimulating and remarkable event for us to enjoy.

The Annual Meeting is the focus of ASPO's efforts to exchange scientific information and inspire new directions, foster translation of our science, and promote the advancement of our members, offering guidance, inspiration, and support towards their career success. Cancer health equity is a cross-cutting theme with diversity and inclusion embraced at all levels. To this end, the 2024 program includes a slate of luminary figures in our field and an array of exciting scientific and professional development sessions. In anticipation of ASPO's 50th anniversary, this meeting offers "Looking Back, Thinking Forward" sessions, with an introduction by a senior prevention scientist and flash talks from our early-career members and attendees. In addition to the long-standing career development focus on our younger members, the program committee has added activities focused on mid-career scientists.

Over the past several years, the ASPO Annual Meetings have included community science sessions that foster interaction between scientists and community outreach staff representing our cancer centers. I am thrilled that for the first time, we offer travel scholarships for and integrate patient and community advocates. I hope that this becomes a tradition. Bidirectional engagement with patient and community advocates strengthens our research and is critical for meaningful translation and broad dissemination of cancer prevention research. Further, I believe that we must nurture these partnerships as they are critical for optimizing public health impact, promoting health equity, and reducing cancer health disparities.

We are so glad you could be here. Enjoy!



Warmly,

Anita Kinney, PhD, RN
ASPO President 2023-2025

ASPO *American Society of
Preventive Oncology*



Land Acknowledgement

We respectfully acknowledge we are on the land and territories of Indigenous peoples. The City of Chicago is located on land that is and has long been a center for Native peoples. The area is the traditional homelands of the Anishinaabe, or the Council of the Three Fires: the Ojibwe, Odawa, and Potawatomi Nations. Many other Nations consider this area their traditional homeland, including the Myaamia, Ho-Chunk, Menominee, Sac and Fox, Peoria, Kaskaskia, Wea, Kickapoo, and Mascouten. We acknowledge that Indigenous peoples are part of our nation's past, present, and future.

Anti-Bullying and Harassment Policy

The American Society of Preventive Oncology (ASPO) encourages open and honest intellectual debate as part of a welcoming and inclusive atmosphere at every conference. To help maintain an open and respectful community of professionals, ASPO does not tolerate inappropriate behavior at our conference, including bullying or harassment of any kind, sexual or otherwise.

ASPO condemns inappropriate or suggestive acts or comments that demean another person by reason of their gender, gender identity or expression, sexual orientation, race, religion, ethnicity, age, disability, or scientific viewpoint; or that are unwelcome or offensive to other attendees.

If you believe you have been subjected to or have otherwise experienced behavior at an ASPO conference that violates our Anti-Bullying and Harassment Policy, please act promptly to report the issue to ASPO's President and Executive Director so that steps may be taken to address the situation immediately.

ASPO reviews allegations of any such behavior on a case-by-case basis, and violations may result in cancellation of a conference registration or the prohibition of future attendance by particular individuals.

ASPO will investigate complaints fairly and discreetly, with an emphasis on conducting a rapid inquiry, the results of which typically will be shared with both the individual reporting the issue and the individual(s) who has been accused of violating the Policy. Reports requesting anonymity will be respected, although ASPO reserves the right to notify appropriate law enforcement should the allegations be serious enough to warrant such notice.

Statement Against Racism

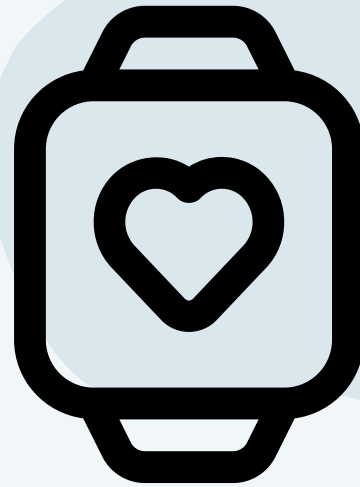
The continued senseless killings and racist violent acts upon people of color have been emotionally overwhelming and traumatic. In 2020, we saw the blatant disregard for Black lives in the murder of George Floyd, Breonna Taylor, and Ahmaud Arbery. Since the COVID-19 pandemic, we have seen a dramatic rise in racist-fueled violence perpetuated against the Asian American and Pacific Islander (AAPI) communities, with nearly 4000 racist incidents reported to the organization AAPI Hate. The Atlanta murder of seven AAPIs further compounded this trauma. These events bring to the forefront the significant and inexcusable racism that continues to be an epidemic in our country. We stand behind the Black and AAPI communities that continue to bear the brunt of these brutal acts of violence. ASPO expresses our solidarity with the protests against the historical racial injustices experienced within the Black community and our understanding of the historical and ongoing xenophobic, misogynistic, and hate based crimes experienced by our AAPI communities. Our commitment is to all marginalized communities and we recognize that these struggles are intertwined.

ASPO is an organization that values differences, diversity, shared compassion for humanity, and a commitment to research to reduce disparities in health. We call upon our colleagues, members, and the broader scientific community, to commit to anti-racism. As an organization, ASPO will continue to unequivocally denounce and condemn racialized violence and hate. We pledge to advocate on your behalf and support you as we re-commit to address the deep systemic injustice of racism and advancing equity, inclusion, and health for all people. We cannot and will not stay silent. Action is necessary to make a difference, and so we commit to:

- Work to continue to grow a more inclusive and diverse organization at all levels, led by the new Diversity and Inclusion Committee
- Make our meetings and organization safe places to express our views, concerns, fears, and frustrations due to these tragic events.
- Encourage our members to get involved in advocacy against racism.

We know that together we can make a difference. The call to action should also give us pause to think about Dr. Martin Luther King Jr.'s insightful words delivered in his last Christmas sermon before his assassination: ***"It really boils down to this: that all life is interrelated. We are all caught in an inescapable network of mutuality, tied in a single garment of destiny. Whatever affects one directly, affects all indirectly."***

ASPO 48TH ANNUAL MEETING STEP CHALLENGE



1

Track your steps throughout the meeting on your phone, pedometer, or smart watch/FitBit

2

Scan this QR code at the end of the meeting to enter your results in the survey

3

The top three individuals with the most steps will receive a \$100, \$75, and \$50 amazon gift card!



ASPO Step Challenge Survey

FOR INQUIRIES, EMAIL US AT
NATIONALOFFICE@ASPO.ORG

SPONSORED BY THE
LIFESTYLE BEHAVIORS, ENERGY BALANCE
& CHEMOPREVENTION SIG

Special Thanks

The ASPO Executive Committee offers special thanks to Program Co-Chairs, Dr. Amy Leader and Dr. Cheryl Thompson, for their extraordinary commitment in facilitating the development of the program for this meeting, and to the entire 2024 ASPO Program Committee for sharing their expertise and their valuable contributions to the program.

Program Co-Chairs

Amy Leader, DrPH, MPH, *Sidney Kimmel Cancer Center at Jefferson*

Cheryl Thompson, PhD, *Penn State Cancer Institute*

2024 Program Committee Members

Ronny Bell, PhD, MS, *University of North Carolina at Chapel Hill*

Carolyn Fang, PhD, *Fox Chase Cancer Center*

Carolyn Heckman, PhD, *Rutgers Cancer Institute of New Jersey*

Alison Herrmann, PhD, MS, *University of California Los Angeles*

Cheryl Jernigan, *Lead Patient Research Advocate, University of Kansas Cancer Center*

Anita Kinney, PhD, RN, *Rutgers Cancer Institute of New Jersey*

Anne Kirchhoff, PhD, MPH, *University of Utah*

Scherezade Mama, DrPH, *The University of Texas MD Anderson Cancer Center*

Electra Paskett, PhD, *The OSU Comprehensive Cancer Center*

Katharine Rendle, PhD, MSW, MPH, *University of Pennsylvania*

Margaux Stack-Babich, MPH, *University of California San Diego*

Carmina Valle, PhD, MPH, *University of North Carolina at Chapel Hill*

Karen Wernli, PhD, *Kaiser Permanente Washington Health Research Institute*

ASPO Community & Science Section Planning Committee Members

Co-Chairs

Alison Herrmann, PhD, MS, *University of California, Los Angeles Jonsson Comprehensive Cancer Center*

Margaux Stack-Babich, MPH, *University of California, San Diego Moores Cancer Center*

Past Co-Chairs

Lorna McNeill, PhD, MPH, *The University of Texas MD Anderson Cancer Center*

Cassandra Harris, MS, MCHES, *The University of Texas MD Anderson Cancer Center*

Committee Members

Kenisha Avery, MPH, *Moffitt Cancer Center*

Nikia Clark-Robinson, BS, *Roswell Park Comprehensive Cancer Center*

Garrett Harding, BS, *University of Utah Health Huntsman Cancer Institute*

Nita Lee, MD, MPH, *The University of Chicago Medicine, University of Chicago Comprehensive Cancer Center*

Yamilé Molina, MS, MPH, PhD, *University of Illinois Chicago School of Public Health, University of Illinois Cancer Center*

Stephanie Pharr, MS, CHES, *The University of Oklahoma Health Sciences Center Stephenson Cancer Center*

Armenta Washington, MS, *University of Pennsylvania Medicine Abramson Cancer Center*

Ambrose Wilson-Brown, *Medical College of Wisconsin Cancer Center*

Keisha Windham, DPA, MPPA, *Washington University School of Medicine Siteman Cancer Center*

ASPO Leadership

ASPO Executive Committee Members

President

Anita Kinney, PhD, RN, *Rutgers Cancer Institute of New Jersey*

President-Elect

Michael Scheurer, PhD, MPH, *Baylor College of Medicine*

Past President

Elena Martinez, PhD, *UC San Diego, Moores Cancer Center*

Secretary/Treasurer

Allison Burton-Chase, PhD, *Albany College of Pharmacy and Health Sciences*

At-Large Members

Deborah Glueck, PhD, MS, *University of Colorado*

Lorna McNeill, PhD, MPH, *MD Anderson Cancer Center*

Yamilé Molina, PhD, MPH, MS, *University of Illinois*

Staff

Billi Carson, *Executive Director*

Stephanie Garwood, *Meeting Manager*

Brenna Lechner, *Membership & Communications Manager*

Special Interest Group Leadership

Behavioral Science & Health Communication

Chair: Linda Ko, PhD, MPH

Vice-Chair: Carolyn Heckman, PhD

Molecular Epidemiology & The Environment

Chair: Sheetal Hardikar, PhD, MBBS

Vice-Chair: Humberto Parada, PhD, MPH

Lifestyle Behaviors, Energy Balance & Chemoprevention

Chair: Adriana Coletta, PhD, MS, RD

Vice-Chair: Lin Yang, PhD

Survivorship & Health Outcomes/Comparative Effectiveness Research

Chair: Karen Wernli, PhD

Vice-Chair: Erin Mobley, PhD, MPH

Cancer Health Disparities

Chair: Arnethea Sutton, PhD

Vice-Chair: Bonnie Qin, PhD

Early Detection & Risk Prediction of Cancer

Chair: Katharine Rendle, PhD, MSW, MPH

Vice-Chair: Andrea Burnett Hartman, PhD, MPH

Early Career Development

Chair: Alexandra White, PhD, MSPH

Vice Chair: Saira Khan, PhD, MPH

Global Cancer Research

Chair: Rahma Mkuu, PhD, MPH, CPH

Vice Chair: Kelly Kohler, PhD, MSPH

Abstract Reviewers

Thank you to the abstract reviewers who volunteered their time to review and score more than 250 submissions.

Samuel Antwi
Victoria Bandera
Gabriel Benavidez
Erin Bowles
Allison Burton-Chase
Anlan Cao
Adriana Coletta
Casey Daniel
Ashish Deshmukh
Christina Dieli-Conwright
Lisa DiMartino
Emily Dunston
Patricia Erickson
Carolyn Fang
Albert Farias
Scarlett Gomez
Sheetal Hardikar
Rashelle Hayes
Erin Hirsch
Young-Rock Hong
Jessica Islam
Shama Karanth
Nawal Kassem
Kevin Kensler
Saira Khan
Kara Landry
Manoela Lima Oliveira
Holli Loomans-Kropp
Sukh Makhnoon
Scherezade Mama
Bailey Martin-Giacalone
Elena Martinez
Kelsey Maslana

Laurie McLouth
Jennifer Moss
Rasmi Nair
Christine Neslund-Dudas
Jesse Nodora
Ellen O'Meara
Carol Ochoa-Dominguez
Feyi Odebunmi
Eyal Oren
Atinuke Oyinbo
Humberto Parada
Lani Park
Electra Paskett
Michael Passarelli
Erica Phillips
Jesse Plascak
Melanie Potiaumpai
Leah Puklin
Bo Qin
Cody Ramin
Carola Sanchez-Diaz
Ami Sedani
Erin Siegel
Jim Stimpson
Joseph Su
Jessica Thompson
Carmina Valle
Tengteng Wang
Karen Wernli
Lusine Yaghjian
Lin Yang
Nur Zeinomar



Awards



2024 Joseph F. Fraumeni, Jr. Distinguished Achievement Award

Melissa Bondy, PhD, Stanford University

The Joseph F. Fraumeni, Jr., Distinguished Achievement Award is presented to an outstanding scientist in the area of preventive oncology, cancer control and/or cancer prevention.

Dr. Melissa Bondy is the inaugural chair of the Department of Epidemiology and Population Health and the Associate Director for Population Sciences at the Stanford Cancer Institute. Before joining Stanford, she was Associate Director of Cancer Prevention and Population Sciences and section chair of Epidemiology and Population Sciences at Baylor College of Medicine. Her research focus is in genetic and molecular epidemiology and is at the forefront of developing innovative ways to assess the roles of heredity and genetic susceptibility in the etiology of cancer and outcomes, primarily brain and breast cancer. Currently, she leads the largest family study of glioma patients, as well as a study of molecular predictors of outcome for glioma patients. She has a strong interest in health disparities and has a current study to investigate the ethnic differences in glioma. She has been working on studying the health effects of exposure to Hurricane Harvey. She serves on the National Cancer Institute's (NCI) Board of Scientific Advisors, where she provides direct counsel to the Director of the NCI, and is a member of the External Advisory Board for several NCI-designated cancer centers. In 2018, she received the Visiting Scholar Award from the NCI Division of Cancer Epidemiology and Genetics.



Joseph W. Cullen Memorial Award

Matthew Carpenter, PhD, Medical University of South Carolina

The Joseph W. Cullen Memorial Award is to recognize an individual's distinguished achievement in continued national tobacco control efforts, through research, through the development of prevention and cessation programs with wide-reaching public health impact, or through public policy and advocacy initiatives.

Dr. Carpenter received his Ph.D. in Clinical Psychology from the University of Vermont in 2003, and relocated to the Medical University of South Carolina (MUSC) in Charleston SC, where he currently is a Tenured Professor, serving as co-leader of the Cancer Control Program within MUSC Hollings Cancer Center. His primary research interests relate to tobacco use across a broad methodological continuum: from lab-based studies of craving and nicotine dependence, to small and large scale clinical trials for smoking cessation, to public health policy for effective tobacco control. He has led a number of large national cessation trials, including a large cluster randomized trial in primary care. He leads a robust program of research on alternative products, including clinical trials of e-cigarettes. He is an innovator of methods for remote clinical trials. Dr. Carpenter has had continuous funding from NIH since 2007. Prior/current funding includes a Career Development Award (K23), multiple R01s and R21s (NCI & NIDA), and foundation grants, all as Principal Investigator. Throughout, Dr. Carpenter is keen on trainee development, encouraging a long line of trainees to develop their own science (primary mentor for T32, F32, K07, K01, 2 K23s, 3 ACS and various NIH LRP recipients) and progress in their own professional careers (>6 prior trainees now in academia). He has served on a number of NIH study sections, including several as Chair. Most recently (2022-), Dr. Carpenter has taken on a new role within NIH CSR Advisory Council (CSRAC).

13th Annual Electra Paskett Travel Award for the Top-Ranked Pre- or Post-doctoral Fellow Abstract

Eduardo Santiago-Rodríguez, MPH, *University of California, San Francisco*

Medicaid Expansion and Differences in Late-Stage Colorectal Cancer Diagnosis by Race and Ethnicity in the US, 2009-2017

ASPO Travel Awards for Top-Ranked Abstracts

Mandy Goldberg, PhD, MPH, NIEHS

Radiation Treatment for Benign Conditions during Windows of Susceptibility and Breast Cancer Incidence

Erin Hirsch, PhD, *Hackensack Meridian Health*

"It Needs to Feel Approachable": Using Photovoice to Inform Lung Cancer Screening Imagery

Leah Puklin, MPH, *Yale School of Public Health*

A Qualitative Study Exploring Barriers to and Facilitators of Modifying Nutrition and Physical Activity Behaviors during Chemotherapy for Breast Cancer in the Lifestyle, Exercise and Nutrition EARly after diagnosis (LEANer) Trial

Julia Stal, PhD(c), *University of Southern California*

"I'm sure there are guidelines, but I'm not familiar with them": A Qualitative Study Exploring Barriers to Delivering Guideline-Concordant Fertility Discussions among Oncologists and Patients of Reproductive Age

American Cancer Society 12th Annual Calle/Rodriguez Minority Travel Award for a Top-Ranked Abstract (Funded by the American Cancer Society)

Jinghua An, PhD, RN, *Rutgers Cancer Institute of New Jersey*

Randomized Trial Promoting Cancer Genetic Risk Assessment When Genetic Counseling Cost Was Removed: 1-year Follow-up

Brianna Leitzelar, PhD, MS, MA, *Wake Forest Univ School of Medicine*

Race/Ethnicity and Employment Predict Quality of Life among Cancer Patients of Mixed Diagnoses

Community Advocate Travel Awards

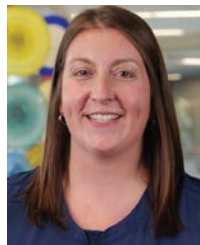
New this year, ASPO offered five travel awards for Community Advisory Board members or other Community or Patient advocates to attend the Annual Meeting.



Sri Ram Cancer Centre, Mahatma Gandhi Medical College and Hospital, Jaipur India

Lalit Mohan Sharma

Dr. Lalit Mohan Sharma is Assistant Professor in Medical Oncology at Mahatma Gandhi Institute of Medical Sciences and Technology, Jaipur, India. He is passionate about cancer prevention in India and developing countries. He looks forward to learning new dimensions for effective prevention and early diagnosis of cancer. These efforts will ultimately translate into positive impact in reducing the cancer burden.



University of Iowa Holden Comprehensive Cancer Center

Jennifer Van Der Vliet

Jennifer is the Director of Oncology at a critical access hospital in SW Iowa. As a seasoned radiation therapist, Jennifer has found great fulfillment in working directly with oncology patients. She navigates her professional path with a genuine passion for improving cancer care, especially in rural settings. Jennifer also serves as a member of the Holden Comprehensive Cancer Center Community Advisory Board and is a co-chair for the Iowa Cancer Consortium Rural Workgroup.

Travel Awards (continued)



University of Texas MD Anderson Cancer Center

Nikki Tripplett

Nikki currently lives in Houston, TX and was diagnosed with multifocal breast cancer at age 36, in 2015. Nikki is a runner, influencer, entrepreneur, and breast cancer advocate. In 2018 she walked the runway during NY Fashion Week to raise funds and awareness for Stage IV Breast Cancer research. She has worked extensively with the Young Survival Coalition to fundraise, provide support programs to cancer survivors, represent the community and share information about breast cancer with the community. She has been featured in both Forbes and Glamour Magazine for her breast cancer advocacy efforts.



Legacy of Hope

Michael Rowe

Michael Rowe is the founder and CEO of Legacy of Hope, a non-profit organization based in Philadelphia, PA that aims to overcome acute food insecurity for cancer patients and their families. Mike is an avid runner and a fierce advocate for the disadvantaged. Michael graduated summa cum laude with a BS from Jefferson University and was recently a semi-finalist for Philadelphia's Health Hero award.



Latinas Contra Cancer

Darcie Green

Darcie Green is the Executive Director of Latinas Contra Cancer and brings with her 20 years of community activism and public policy experience. Latinas Contra Cancer works to ensure just and equitable access to health and healthcare for the Latino community around issues of cancer. While working for a nonprofit health insurance and hospital system, Darcie led local efforts on health policy, often bringing together unlikely allies and resources to support improved health outcomes for uninsured or underinsured populations. Prior to entering the nonprofit and healthcare sectors, Darcie worked as a field representative in the CA State Legislature. Darcie served four years in appointed in public office and six years in elected public office serving on her Alum Rock Union School Board, County Board of Education, and County Commission on the Status of Women. Darcie currently serves as Chair of the Santa Clara County Race and Health Disparities Community Board.



New Investigators

The New Investigators Workshop recruits pre- and post-doctoral investigators working in the area of preventive oncology through an application process. An experienced set of faculty members provide advice and mentoring, after listening to brief presentations by the investigators. Mentoring topics include science, grantsmanship, and work/life balance. For 2024, the workshop was expanded to allow 12 new investigators to participate.

Congratulations to the 2024 New Investigators!

Lauren Giurini, BA, University of Wisconsin-Madison

Evaluating the Influence of Neighborhood SES on Colonoscopy Use as a Potential Cause of Colorectal Cancer Disparities

Alexandra Harris, PhD, MPH, MS, National Cancer Institute, NIH

Characterizing the transcriptomic and immune landscape of benign breast lesions in relation to mammographic density

Courtney Hill, MS, University of Washington; Fred Hutchinson Cancer Center

Addressing racial and ethnic disparities in colorectal cancer: Associations of the neighborhood environment with the gut microbiome and colorectal cancer in the Multiethnic Cohort Study

Dong-Woo Kang, PhD, Dana-Farber Cancer Institute

Exercise for Tumor Suppressive Impact in Black Men with Prostate Cancer on Active Surveillance: The REMOVE Trial

Bailey Martin-Giacalone, PhD, Washington University School of Medicine in St. Louis

Examining Cancer Prevention and Control Needs in a Midwest Asian Community through Intergenerational Participatory Action Research

Maura McCall, PhD, MSN, RN, OCN, Case Western Reserve University

Utilizing Community Engagement and Multi-Omics to Examine the Biological Underpinnings of Endocrine Therapy Symptoms and Adherence in Black Women with Breast Cancer

Debanjan Pain, MD, University of Pennsylvania

Video Intervention to Increase Knowledge and Intention to Enroll in Clinical Trials among Black Individuals in Philadelphia

Ranjita Poudel, PhD, Moffitt Cancer Center

Mindfulness Based Intervention for Stress Management among Caregivers of Adolescents and Young Adult Cancer Patients

Sarah Price, PhD, Wake Forest University School of Medicine

Refining Cognitive Behavioral Therapy for Insomnia to Enhance Feasibility, Acceptability, and Outcomes for Lung Cancer Survivors with Insomnia and Comorbid Symptoms

Leah Puklin, MPH, Yale School of Public Health

A Qualitative Study Exploring Barriers to and Facilitators of Modifying Nutrition and Physical Activity Behaviors during Chemotherapy for Breast Cancer in the Lifestyle, Exercise and Nutrition EARly after diagnosis (LEANer) Trial

Ami Sedani, PhD, MPH, Medical College of Wisconsin

Addressing Social Determinants for Equitable Colorectal Cancer Screening Uptake: A Multi-Methods Study

Mimi Ton, MPH, University of Washington

Area-Level Factors and the COVID-19 Pandemic as Contributors to Disparities in Cancer Detection

Special Thanks to the Workshop Faculty:

Michael Scheurer, PhD, MPH, Baylor College of Medicine, Workshop Organizer

Brenda Birmann, ScD, Dana-Farber/Harvard Cancer Center

Deborah Glueck, PhD, University of Colorado School of Medicine

Theresa Hastert, PhD, Wayne State University

Lauren Houghton, PhD, Columbia University

Jessica Islam, PhD, MPH, Moffitt Cancer Center

Kristen Purrington, PhD, MPH, Wayne State University

Charles Rogers, PhD, MPH, Medical College of Wisconsin

Cheryl Thompson, PhD, Penn State Cancer Institute

Adetunji Toriola, MD, PhD, MPH, Washington University in St. Louis

Tengteng Wang, PhD, Rutgers Cancer Institute of New Jersey

Shaneda Warren Andersen, PhD, MS, University of Wisconsin

General Information

Registration/ Information Table Hours

Saturday	12:00 pm – 4:30 pm
Sunday	7:30 am – 6:00 pm
Monday	7:30 am – 4:00 pm
Tuesday	7:30 am – 1:00 pm

Internet Access

Wifi is available in the meeting space. Connect to the Swissôtel Meetings network and use password **aspo2024**.

Closed Captioning

Closed captioning provided via AI is available for sessions in Zurich D and Zurich E. You can access the captions on your own device by visiting aspo.org/captions.

Poster Receptions

There are two poster sessions this year, each with different posters. These take place on Sunday, March 17 and Monday, March 18 from 5:30 - 7:00 pm in Vevey.

Poster presenters should hang posters between 4:00 & 5:15 pm on their assigned presentation day. Poster boards will be numbered, and presenters can find their poster number in the poster listing beginning on page 24. Pushpins will be provided. Please remove your poster at the end of your poster session. ASPO is not responsible for posters left on boards.

During the poster sessions, light hors d'oeuvres will be served, and a cash bar will be available.

Meals

Continental Breakfasts and Box Lunches are provided on Monday and Tuesday. If you made a special dietary request that is not accommodated by the food provided, please contact a hotel banquet staff member.

Physical Activity and Gentle Movement

The Lifestyle Behaviors, Energy Balance & Chemoprevention SIG has organized a step contest – see the information on page 5. Scan the QR code to participate and win prizes! The SIG also created a flyer showcasing the benefits of and tips for gentle movement, which can be found on tables in the meeting rooms. Additionally, standing space is available in meeting rooms for those who prefer not to sit.

Lactation Room

A room is available during conference hours for nursing mothers. To use the room, pick up a key at the ASPO registration desk.

Funding

Funding for this conference was made possible (in part) by from the National Cancer Institute. The views expressed in written conference materials or publications and by speakers and moderators do not necessarily reflect the official policies of the Department of Health and Human Services; nor does mention by trade names, commercial practices, or organizations imply endorsement by the U.S. Government.

Save the Date for 2025!

Next year's meeting will be held April 6-8 at the Loews Philadelphia. Abstract submission opens in October.

ASPO
*American Society of
Preventive Oncology*

Agenda



Associate Director / Program Leader Pre-Conference Workshop

Room: Vevey

This workshop is open only to cancer center leaders. Pre-registration required.

Saturday, March 16

1:00 pm

Welcome

Electra Paskett, PhD, *The Ohio State University*

Part 1: Special Topics

1:15 - 2:15 pm

The Evolution of Population Sciences – Past, Present, & Future

Moderator: Christine Ambrosone, PhD, *Roswell Park Comprehensive Cancer Center*

Panelists: Melissa Bondy, PhD, *Stanford Comprehensive Cancer Center*;
Shelley Tworoger, PhD, *Knight Cancer Institute*; Gloria Coronado, PhD, *University of Arizona
Comprehensive Cancer Center*

2:15 - 3:15 pm

The Evolution of COE – Past, Present, and Future

Moderator: Susan Vadaparampil, PhD, *Moffitt Cancer Center*

Panelists: Monica Baskin, PhD, *UPMC Hillman Cancer Center*; Evelinn Borrayo, PhD, *University of
Colorado Cancer Center*; Yamilé Molina, PhD, *University of Illinois Cancer Center*

3:15 - 3:30 pm

Networking Break

Part 2: CCSG Application

3:30 – 4:30 pm

CCSG Application – Population Science Programs

Moderator: Jasmin Tiro, PhD, *University of Chicago Medicine Comprehensive Cancer Center*

Panelists: Jiyoung Ahn, PhD, *NYU Perlmutter Cancer Center*; Terry Hyslop, PhD, *Sidney Kimmel
Cancer Center*; Andrew Hyland, PhD, *Roswell Park Comprehensive Cancer Center*

- 4:30 - 5:30 pm **CCSG: Application: Community Outreach and Engagement**
Moderator: Lorna McNeill, PhD, *MD Anderson Cancer Center*
Panelists: Pamela Hull, PhD, *University of Kentucky Markey Cancer Center*;
Lucile Adams-Campbell, PhD, *Georgetown Lombardi Cancer Center*; Marvella Ford, PhD, *Medical University of South Carolina Hollings Cancer Center*
- 5:30 – 6:30 pm **CCSG Application: Review**
Moderator: Bettina Drake, PhD, *Siteman Cancer Center*
Panelists: Melissa Simon, MD, *Northwestern University Lurie Cancer Center*;
Amy Trentham-Dietz, PhD, *University of Wisconsin Carbone Cancer Center*
- 6:30 - 7:30 pm **Fireside Chat with Three Cancer Center Directors**
Moderator: Electra Paskett, PhD.
Panelists: Leon Platanius, MD, *Northwestern Lurie Cancer Center*; Adekunle Odunsi, MD, PhD
University of Chicago Medicine Comprehensive Cancer Center; Jan Kitajewski, PhD, *University of Illinois Cancer Center*
- 7:30 - 8:30 pm **Reception – Hosted by the Ohio State University and ASPO**
Room: Montreux

Sunday, March 17

- 7:30 am **Continental Breakfast**
8:00 am **Welcome:**
Electra Paskett, PhD, OSU

Part 3: NCI Session: Updates and Listening

- 8:00 - 10:00 am **Moderator:** Hasnaa Shafik, PhD, *Office of Cancer Centers*
Division of Cancer Prevention – Jessica Faupel-Badger, PhD, MPH
Division of Cancer Control and Population Sciences – Katrina Goddard, PhD
Office of Cancer Centers – Hasnaa Shafik, PhD
Questions from the Audience
- 10:00 - 11:00 am **CCSG: Implementation of the Plan to Enhance Diversity (PED)**
Moderator: Carmen Guerra, MD, *MSCE Abramson Cancer Center, University of Pennsylvania*
Results of the Cancer Center Diversity, Equity, and Inclusion (DEI) Network Member Survey
Panelists: Brian Gonzalez, PhD, *Moffitt Cancer Center*; Marquita Taylor, PhD, *University of Virginia Comprehensive Cancer Center*
- 11:00 - 11:55 am **CRETC, PED, and COE: Intersection in CCSG**
Moderator: M. Eileen Dolan, PhD, *University of Chicago Medicine Comprehensive Cancer Center*
Panelists: Jason Mendoza, MD, MPH, *Fred Hutchinson Cancer Center*;
Robert Winn, MD, *Virginia Commonwealth University, Massey Comprehensive Cancer Center*
- 12:00 pm **Adjourn**

ASPO 48th Annual Meeting

Sunday, March 17

12:00 pm - 1:00 pm

Zurich E

Early Career Session: Cultivating Success: Mentorship and Resourceful Approaches to Academic Career Development

Chairs: Samantha R. Jones, PhD, *Medical College of Georgia, Augusta University* & Melissa Lopez-Pentecost, PhD, MS, RDN, *Sylvester Comprehensive Cancer Center, University of Miami*

Speakers: Justin X. Moore, PhD, *University of Kentucky*,
Lin Yang, PhD, *Cancer Care Alberta, Alberta Health Services*,
Kilan Ashad-Bishop, PhD, *American Cancer Society*,
Melinda Irwin, PhD, MPH, *Yale Cancer Center*

This session will explore vital aspects of mentorship across diverse career stages. Topics will include the multifaceted roles mentors play at different academic phases, the responsibilities of both mentors and mentees, and an examination of unconventional paths within the academic journey. Additionally, the session will delve into a comprehensive discussion of various resources aimed at supporting and enhancing the academic journey of an early-stage investigator.

1:15 pm - 2:15 pm

Zurich E

Early Career Session: Insights into the NCI's Early Investigator Advancement Program

Chairs: Jessica Y. Islam, PhD, MPH, *H. Lee Moffitt Cancer Center and Research Institute* & Malcolm Bevel, PhD, *Georgia Cancer Center, Augusta University*

Panelists: Arnethea Sutton, PhD, MS, *Virginia Commonwealth University*;
Jessica Y. Islam, PhD, MPH, *H. Lee Moffitt Cancer Center and Research Institute*;
Jobeth Jean-McCarthy, MPH, *CPH National Cancer Institute*

Racial and ethnic minoritized scientists are less likely to receive major funding from the National Institutes of Health and other government funding agencies compared to their White colleagues. Inequities in funding opportunity suggest racial and ethnic minoritized scientists may experience barriers to receiving an R01, which is a prerequisite to promotion and tenure in academic institutions including NCI-designated Cancer Centers. To address these barriers and facilitate the advancement of diverse scientists to independent investigators, the National Cancer Institute's Center to Reduce Cancer Health Disparities (CRCHD) has developed a program titled the Early Investigator Advancement Program (EIAP). The EIAP was developed to support Early Stage Investigators and New Investigators from minoritized backgrounds in their professional and career development as junior investigators. The EIAP offers support in developing professional skills, constructing an R01 grant application, and connecting with mentors and peers to foster a diverse community of emerging established investigators. Through this session, participants will hear from administrators of the NCI and prior participants of the EIAP program to share their experience through the EIAP, goals of the program, and major takeaways on how to optimize applications to the program.

Zurich D

ASPO Mid-Career Special Interest Group Session: Navigating Mid-Career and Preparing for Promotion

Moderator: Theresa Hastert, PhD, *Wayne State University*

Panelists: Hazel B. Nichols, PhD, *Gillings School of Global Public Health, University of North Carolina* & Karen J. Wernli, PhD, *Kaiser Permanente Washington Health Research Institute*

This session will feature a panel discussion of two ASPO members who have been recently promoted to senior positions (Professor or equivalent) in academic research environments, discussing strategies for navigating mid-career and evolving expectations and priorities associated with professional advancement. This will include several pre-specified questions and discussion topics as well as time for audience questions. After the panel discussion, there will be a broader discussion of proposed SIG activities, including brainstorming topics and possible presenters for future programming and assessing participant interest in ongoing SIG involvement and potential roles in leading or organizing SIG activities.

2:30 pm - 4:00 pm

Zurich D

Community & Science Session

The Power of Patient and Community Advocates in Addressing Cancer Disparities

Joanne Glenn, RN, MBA, *Founder & CEO, WOT (Women on Top of Their Game) Foundation, Inc.*

Phyllis L. Rodgers, *Founder & CEO, Peer Plus Education and Training Advocates*

Juanita Arroyo, CHW, *Community Health Worker, ELLAS (en la lucha a sobrevivir)*

Paris Thomas, MS, MCHES, PhD, *Executive Director, Equal Hope*

Co-Moderators:

- Dedra Ries, MPH, *Director of Community Engagement and Health Equity | University of Illinois Cancer Center*
- Gina Curry, MPH, MBA, *Director for Community Outreach & Engagement | The University of Chicago Comprehensive Cancer Center*
- Tarneka Manning, MEd, *Administrative Director | Lurie Cancer Center of Northwestern University*

3:00 pm - 4:00 pm

Montreux 2

Cancer Prevention & Research Training Program Directors Meeting (open to current and aspiring training program directors)

This facilitated session will focus on issues and strategies cancer prevention research training program directors would like to discuss. Staff from NCI, including the Office of the Cancer Training Branch and the Division of Cancer Prevention will participate as well.

4:15 pm - 5:30 pm

Zurich D

Opening Session

Conference Welcome

Anita Kinney, PhD, RN, *Rutgers Cancer Institute of New Jersey*

Cullen Award Address

Matthew Carpenter, PhD, *Medical University of South Carolina*

Fraumeni Award Address

Melissa Bondy, PhD, *Stanford University*

5:30 pm - 7:00 pm

Vevey

Poster Session/Reception 1

Sponsored by Penn State Cancer Institute

Poster listing is on page 24. Scan the QR code to view poster abstracts.



Monday, March 18

8:00 am - 9:15 am **Concurrent Breakfast Sessions**

Zurich D

Risk Stratification Communication and Intervention for Cancer Screening and Early Detection: Opportunities and Challenges

Hormuzd Katki, PhD, NCI; Li Hsu, PhD, *Fred Hutchinson Cancer Center*; Vida Henderson, PhD, PharmD, *Fred Hutchinson Cancer Center*

Sponsored by the Behavioral Science and Health Communication and Early Detection and Risk Prediction of Cancer Special Interest Groups

Zurich E

Collaborating Across Borders: Advancing Health Equity through Global Cancer Connections

Rahma Mkuu, PhD, MPH, CPH, *University of Florida* & Kelly Kohler, PhD, MSPH, *Rutgers School of Public Health*

Sponsored by the Global Cancer Research SIG

9:30 am – 10:15 am **Concurrent Sessions**

Zurich D

Looking Back, Thinking Forward 1: Cancer Screening

Chairs: Karen Wernli, PhD, *Kaiser Permanente* and Katharine Rendle, PhD, *University of Pennsylvania Abramson Cancer Center*

Speaker: **Reflections on the Shift from Average to Risk-based Cancer Screening**
Jasmin Tiro, PhD, *University of Chicago*

Followed by four flash talks:

- **Impact of a Cervical Cancer Screening Education Intervention on Black Women's Knowledge and Health Beliefs**, Adebola Adegboyega, PhD, RN, *University of Kentucky*
- **Assessing Pharmacist Willingness to Implement a Pharmacy-Based CRC Screening Intervention**, Alison Brenner, PhD MPH, *University of North Carolina - CH*
- **"It Needs to Feel Approachable": Using Photovoice to Inform Lung Cancer Screening Imagery**, Erin Hirsch, PhD, *Hackensack Meridian Health*
- **What do Latina Dense Breasts Patients Need to Know in Order to Make an Informed Decision about Supplemental Screening for Breast Cancer? A Qualitative Study**, Suzanne Vang, PhD, *NYU Grossman School of Medicine*

Zurich E

Symposium 1: Social Determinants of Health & Cancer

Chair: Carolyn Fang, PhD, *Fox Chase Cancer Center*

Speakers: **Contributing to Hyper-localized Resource Ecosystems within Minoritized Communities**
Yamilé Molina, PhD, *University of Illinois at Chicago*

Unraveling Complexities in Breast Health Equity: Race, Place, and Racism
Lauren McCullough, PhD, MSPH, *Emory University*

10:30 am - 11:15 am **Concurrent Sessions**

Zurich D

Looking Back, Thinking Forward 2: Tobacco Cessation and Policy

Chair: Carolyn Heckman, PhD, *Rutgers Cancer Institute*

Speaker: Jamie Ostroff, PhD, *Memorial Sloan Kettering Cancer Center*

Followed by four flash talks:

- **The Value of Perspective: What Different Team Members Bring to the Table for Implementing Tobacco Treatment Programs in Oncology Settings**, Jennifer Bird, PhD, *University of Wisconsin-Madison*
- **The Association between Local Tobacco Retail Licensing Ordinances and Youth Cigarette and E-cigarette Use by Household Income**, Siqi Yang, MPH, *Purdue University*
- **Indoor Air Pollution and Lifestyle Factors Associated with Lung Cancer Risk in a Chinese Population**, Fang Fang, PhD, MPH, *University of California, Los Angeles*
- **Association of Environmental Tobacco Smoking with Liver Cancer, and Interaction with HBV Infection in a Chinese Population-based Case-control Study**, Zuo-Feng Zhang, MD, PhD, *UCLA Fielding School of Public Health*

Zurich E

Symposium 2: Innovation in Chemoprevention

Chair: Cheryl Thompson, PhD, *Penn State Cancer Institute*

Speakers: **Chemoprevention: An Evolving Definition**
Jessica Faupel-Badger, PhD, MPH, *National Cancer Institute*

Breast Cancer Prevention: Innovations to Improve the Tried & Tested and Develop the New
Seema Khan, MD, *Lurie Comprehensive Cancer Center of Northwestern University*

11:30 am - 1:00 pm

St. Gallen

Roundtable Lunch (open to all attendees) **Sponsored by Rutgers Cancer Institute of New Jersey**

Community-Academic Partnerships Addressing Social Determinants of Health and Cancer

Table Topics:

- **Food Insecurity and Cancer Outcomes**
Michael Rowe, *Legacy of Hope*
Saria Lofton, PhD, RN, *University of Illinois Cancer Center (Research partner to Mile Square Health Center FQHC)*
- **Building Trustworthy Clinical Systems**
Pamela Ganschow, MD, *Cook County Health and University of Illinois Cancer Center*
Daniela Anderson, MD, *Tapestry 360 Health*
- **Innovative Models to Facilitate Access to Screening**
Zul Surani and Dong Hee Kim, *Cedars Sinai Cancer Center*
Narissa Nonzee, PhD, *City of Hope*

1:15 pm - 2:15 pm

Concurrent Sessions

Zurich D

Best of ASPO: Cancer Disparities 1

Moderator: Scherezade Mama, PhD, *MD Anderson Cancer Center*

- **Examining Factors that Contribute to Racial and Ethnic Disparities in Liver Cancer within an EHR-based Epidemiologic Cohort Linked to Cancer Registries**, Mindy DeRouen, PhD, MPH, *University of California - San Francisco*
- **Correlates of Test Order and Completion for Early Onset Colorectal Cancer (CRC)**, Rasmi Nair, PhD, MBBS, *UT Southwestern Medical Center*
- **Medicaid Expansion and Differences in Late-Stage Colorectal Cancer Diagnosis by Race and Ethnicity in the US, 2009-2017**, Eduardo Santiago-Rodríguez, MPH, *University of California, San Francisco*

- **Rurality and Age-Related Differences in Temporal Trends of Early-Onset Colorectal Cancer Incidence in the State of Georgia, 2000-2018** , Meng-Han Tsai, PhD, *Augusta University*

Zurich E

Best of ASPO: Breast Cancer

Moderator: Karen Wernli, PhD, *Kaiser Permanente*

- **Radiation Treatment for Benign Conditions during Windows of Susceptibility and Breast Cancer Incidence**, Mandy Goldberg, PhD, MPH, *NIEHS*
- **Ultrasound Screening Performance among Women with Dense Breasts by Breast Cancer Risk**, Brian Sprague, PhD, *University of Vermont*
- **Association of Initial Chemotherapy Receipt with Long-Term Risk of Cause-Specific Cardiovascular Disease Among U.S. Breast Cancer Survivors**, Jacqueline B. Vo, PhD, RN, MPH, *National Cancer Institute*
- **Associations between DXA-derived Visceral and Subcutaneous Adipose Tissue and Obesity-Related Cancer Incidence in Postmenopausal Women**, Shelby Ziller, MPH, *University of Arizona*

2:30 pm - 3:30 pm **Concurrent Sessions**

Zurich D

Best of ASPO: Genetics and Genomics

Moderator: Cheryl Thompson, PhD, *Penn State Cancer Institute*

- **KEEP IT (Keeping Each Other Engaged via IT): An Innovative Digital Literacy Training Program for Community Health Workers about Hereditary Breast and Ovarian Cancer among Black Women**, Caitlin Allen, PhD, MPH, *Medical University of South Carolina*
- **Using Implementation Science to Evaluate a Population-wide Genomic Screening Initiative**, Caitlin Allen, PhD, MPH, *Medical University of South Carolina*
- **Characterizing the Transcriptomic and Immune Landscape of Benign Breast Lesions in Relation to Mammographic Density**, Alexandra Harris, PhD, MPH, MS, *National Cancer Institute*
- **Testing Culturally Responsive Genetic Cancer Risk Screening Messages Among Latino Participants**, Autumn Shafer, PhD Mass Communication focus on Health, *University of North Carolina, Chapel Hill*

Zurich E

Best of ASPO: Adolescent and Young Adults

Moderator: Carmina Valle, PhD, *University of North Carolina at Chapel Hill*

- **Exploring Oncologists' and AYA Cancer Survivors' Telehealth Experiences and Perspectives to Inform a Provider Intervention to Optimize Virtual Care**, Crystal Costa, MPH, *UT Health Science Center at Houston*
- **What do Emerging Adults' Future Cancer Considerations Look Like?**, Jacqueline Knight Wilt, MPH, *Virginia Commonwealth University*
- **Characterizing Physiologic Frailty in Childhood Cancer Survivors Still in Childhood: A Report from the St. Jude Lifetime Cohort Study**, Elizabeth Salerno, PhD, MPH, *Washington University School of Medicine*
- **"I'm sure there are guidelines, but I'm not familiar with them": A Qualitative Study Exploring Barriers to Delivering Guideline-Concordant Fertility Discussions among Oncologists and Patients of Reproductive Age**, Julia Stal, PhD(c), *University of Southern California*

3:45 pm - 4:30 pm

Zurich D

Keynote Session

The Future of Cancer Prevention

Robert A. Winn, MD, *VCU Massey Cancer Center*

4:45 pm - 5:15 pm

Zurich D

ASPO Business Meeting

5:30 pm - 7:00 pm

Vevey

Poster Session/Reception 2

Sponsored by Sidney Kimmel Cancer Center

Poster listing is on page 24. Scan the QR code to view poster abstracts.



Tuesday, March 19

8:00 am - 9:15 am

Concurrent Breakfast Sessions

Zurich D

Multi-cancer Early Detection: Can We Harness Emergent Discoveries to Reduce Cancer Disparities?

Yamilé Molina, PhD, *University of Illinois at Chicago* and Timothy Rebbeck, PhD, *Harvard University*

Sponsored by the Disparities Special Interest Group

Zurich E

NCI Priorities and Opportunities in Health Behavior and Cancer Survivorship Research

Karen M. Basen-Engquist, PhD, MPH, *MD Anderson Cancer Center*; Adriana Coletta, PhD, MS, RD, *University of Utah*; Susan M. Czajkowski, PhD, *National Cancer Institute*; Jennifer L. Hay, PhD, *Memorial Sloan Kettering Cancer Center*; Erin M. Mobley, PhD, MPH, *University of Florida*; Emily Tonorezos, MD, MPH, *National Cancer Institute*; Lin Yang, PhD, *Alberta Health Services – Cancer Care*

Sponsored by the Survivorship/CER and Lifestyle Behaviors, Energy Balance, and Chemoprevention Special Interest Groups

National Cancer Institute (NCI) priorities include promoting healthy lifestyles to prevent cancer as well as enhancing the survival, health and well-being of cancer survivors. In this breakfast session, NCI priorities and funding opportunities in the areas of cancer-related health behaviors and survivorship will be presented, and NCI activities focused on the intersection of these areas will be described. In addition, small group sessions will be conducted to gather input to inform NCI activities aimed at understanding and addressing the behavioral, psychosocial, and survivorship needs of cancer survivors and their families.

9:30 am – 10:15am

Concurrent Sessions

Zurich D

Looking Back, Thinking Forward 3: Energy Balance and Cancer

Chairs: Scherezade Mama, PhD, *MD Anderson Cancer Center* and Carmina Valle, PhD, *University of North Carolina at Chapel Hill*

Speaker: Lucile Adams-Campbell, PhD, *Georgetown University*

Followed by four flash talks

- **Association between Pre-diagnosis Diet Quality and Ovarian Cancer Risk and Survival in the NIH-AARP Diet and Health Study**, Anlan Cao, MBBS, *Yale School of Public Health*
- **A 6-month, Multi-site Electronic Health Record-Integrated Physical Activity Intervention (MyActivity) Significantly Increases Physical Activity in Breast & Endometrial Cancer Survivors**, Siobhan Phillips, PhD, MPH, *Northwestern Feinberg School of Medicine*
- **A Qualitative Study Exploring Barriers to and Facilitators of Modifying Nutrition and Physical Activity Behaviors during Chemotherapy for Breast Cancer in the Lifestyle, Exercise and Nutrition EARly after diagnosis (LEANer) Trial**, Leah Puklin, MPH, *Yale School of Public Health*
- **A Community Engagement Studio Approach to Adapting a Dyadic Exercise Program to be Culturally Relevant for Hispanic Men with Prostate Cancer**, Meghan Skiba, PhD, MS, MPH, RDN, *University of Arizona*

Zurich E

Symposium 3: Cancer Prevention Policy

Chair: Amy Leader, DrPH, MPH, *Sidney Kimmel Cancer Center at Jefferson*

Speakers: **The Role of Policy Implementation Science in Cancer Prevention Policy,**
Karen Emmons, PhD, *Harvard T.H. Chan School of Public Health*

The Policy Landscape for Cancer Prevention,
Alyssa Schatz, MSW, *National Comprehensive Cancer Network*

10:30- 11:15 am **Concurrent Sessions**

Zurich D

Looking Back, Thinking Forward 4: Precision Prevention

Chair: Anita Kinney, PhD, RN, *Rutgers Cancer Institute*

Speaker: **Everything Old Is New Again: Building on 50 Years of Precision Prevention,**
Suzanne O'Neill, PhD, *Georgetown University*

Followed by four flash talks

- **Randomized Trial Promoting Cancer Genetic Risk Assessment When Genetic Counseling Cost Was Removed: 1-year Follow-up,** Jinghua An, PhD, RN, *Rutgers Cancer Institute of New Jersey*
- **Bridging Disparities in Hereditary Cancer Risk Assessment: Implementing Universal Screening at an FQHC,** Neha Awati, MD, *University of Illinois at Chicago*
- **Plasma C-peptide, Mammographic Density Parameters, Mammographic Texture Feature, and Risk of Breast Cancer,** Shadi Azam, MSc., PhD, *Weill Cornell Medicine*
- **Association of Combined Polygenic Risk Score and Environmental Score with Risk of Recurrent Adenoma in the PLCO and PPT Cohorts,** Courtney Dill, PhD, MS, *National Cancer Institute*

Zurich E

Symposium 4: Cancer Survivorship

Chairs: Karen Wernli, PhD, *Kaiser Permanente* and Erin Mobley, PhD, MPH, *University of Florida*

Speakers: **Adaptation and Implementation of Mind Your BEAT: A Community-Based Intervention to Increase Physical Activity and Reduce Psychosocial Distress in Rural Cancer Survivors**
Scherezade Mama, DrPH, *MD Anderson Cancer Center*

Cancer Survivorship Implementation Lessons from Primary Care
Shawna Hudson, PhD, *Rutgers University*

11:30 am - 12:45 pm **Zurich E**

Lunch Session: NCI Funding Opportunities

Cancer Prevention, Control, and Training Grants Workshop

Moderator: Jessica Faupel-Badger, PhD, MPH, Office of the Director, *Division of Cancer Prevention, NCI*

- **Cancer Prevention, Early Detection, and Symptom Management Funding Opportunities**
Brandy Heckman-Stoddard, PhD, MPH, Chief, Breast and Gynecologic Cancer Research Group, *Division of Cancer Prevention, NCI*
- **Cancer Epidemiology and Control Funding Opportunities**
April Oh, PhD, MPH, Senior Advisor for Scientific Outreach and Engagement, Office of the Director, *Division of Cancer Control and Population Sciences*
- **NCI Career Development Opportunities featuring the new K01**
Sergey Redaev, PhD, Program Officer, Cancer Training Branch, *Center for Cancer Training*
- **Diversity Career Development Opportunities**
Jobeth McCarthy-Jean, DHSc, MPH, Program Officer, Diversity Training Branch, *Center to Reduce Cancer Health Disparities*
- **NCI Small Business Development Awards**
Sarrah Djemil, PhD, Program Manager, *NCI SBIR Development Center*
- **Program Director Roundtable**

Zurich D

Best of ASPO: Social Determinants of Health

Moderator: Katharine Rendle, PhD, University of Pennsylvania Abramson Cancer Center

- Transcriptional Indicators of Social Determinants of Health and Cancer Outcomes: Donor Socioeconomic Disadvantage and Recipient Mortality Following Allogeneic Hematopoietic Cell Transplantation, Jennifer Knight, MD, MS, Medical College of Wisconsin
- Perceived Neighborhood Social Cohesion and Adherence to Physical Activity Guidelines Among Breast Cancer Survivors, Reed Mszar, MPH, MS, Yale School of Public Health
- Neighborhood Disinvestment as a Predictor of Breast Cancer Survival among Black Women in New Jersey Urban Areas, Jesse Plascak, PhD, Ohio State University
- Evaluating the Impact of a Program to Address Acute Food Insecurity among Cancer Patients, Mike Rowe, Legacy of Hope

Zurich E

Best of ASPO: HPV Screening and Vaccination

Moderator: Electra Paskett, PhD, The Ohio State University

- Impact of School Nurse Education on HPV Knowledge and Self-Efficacy for Vaccine Communication with Parents for Cancer Prevention, Jihye Choi, PhD, MPH, UHealth Houston School of Public Health
- Colposcopy Referral Rates Post-Introduction of Primary Human Papillomavirus Screening for Cervical Cancer: Evidence from a Large British Columbia Cohort Study, Anna Gottschlich, PhD, MPH, Wayne State University
- Associations between Clinic- and Neighborhood-Level Measures of Structural Racism and Discrimination and Cervical Cancer Screening, Amy Hughes, PhD, UTSW ODonnell School of Public Health
- Validation of a Parent HPV Vaccine Misperceptions Scale and its Association with Child HPV Vaccination Status, Corinne McDaniels-Davidson, PhD, MPH, San Diego State University

The James



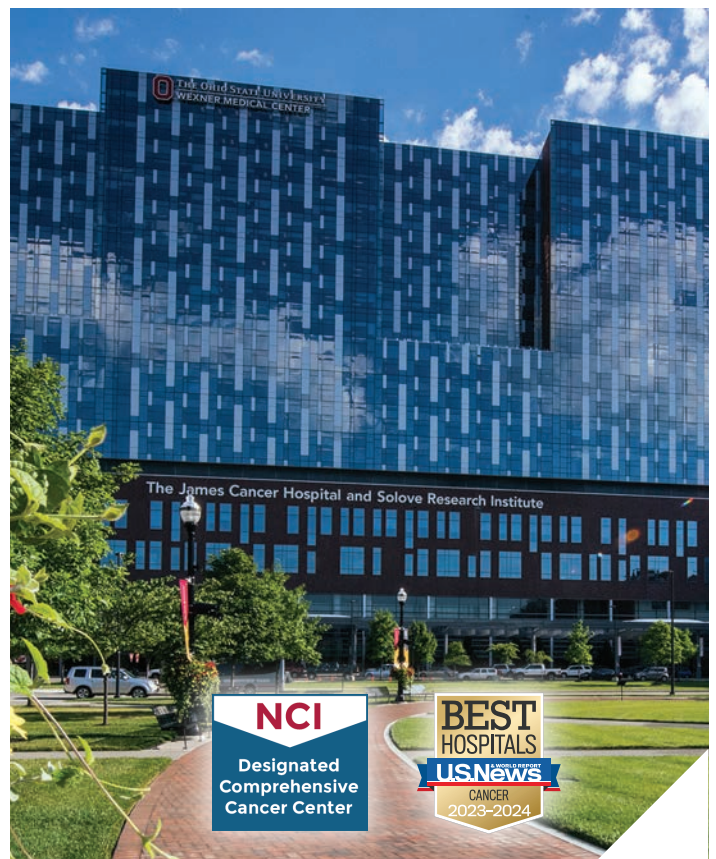
The James at Ohio State

National Cancer Institute-designated Comprehensive Cancer Center for nearly 50 years

Nationally ranked by U.S. News & World Report for 25 years



Scan to learn more about our Cancer Control research program



2:15 pm - 3:15 pm

Concurrent Sessions

Zurich D

Best of ASPO: Cancer Disparities 2

Moderator: Ronny Bell, PhD, MS, *University of North Carolina at Chapel Hill*

- **Advancing Gastric Cancer Equity Inclusive of Low Health Literacy and Limited English Proficient Chinese American Immigrants Living in New York City**, Simona Kwon, DrPH, MPH, *NYU Grossman School of Medicine*
- **Disparities in Ovarian Cancer Survival among Disaggregated Asian American Subgroups**, Alice Lee, PhD, MPH, *California State University, Fullerton*
- **Race/Ethnicity and Employment Predict Quality of Life among Cancer Patients of Mixed Diagnoses**, Brianna Leitzelar, PhD, MS, MA, *Wake Forest Univ School of Medicine*
- **Experiences of Underserved Patients with Abnormal At-Home Cancer Screening Results: A Mixed Methods Analysis**, Jennifer Moss, PhD, *Penn State College of Medicine*

Zurich E

Best of ASPO: Environmental Health

Moderator: Anne Kirchhoff, PhD, MPH, *University of Utah*

- **The Intersection of Social-Environmental Burden and Cancer Outcomes in the US: A Geospatial Analysis**, Kilan Ashad-Bishop, PhD, *American Cancer Society*
- **Ambient Air Pollution Exposure and Urological Cancer Risk in Adults: A Systematic Review and Meta-Analysis of Epidemiological Evidence**, Jinhui Li, PhD, *Stanford University*
- **Associations between Neighborhood Stressors and Allostatic Load in the Pathways Study**, Salma Shariff-Marco, PhD, MPH, *University of California, San Francisco*
- **Air Pollutants and Breast Cancer Risk: An Analysis of Four Large U.S. Prospective Cohorts**, Alexandra White, PhD MSPH, *NIEHS*

3:15 pm

Meeting Concludes

ASPO *American Society of Preventive Oncology*



Poster sessions take place on Sunday, March 17 and Monday, March 18 from 5:30 – 7:00 pm in Vevey. Posters 1-109 will be displayed on Sunday; and posters 110-214 will be displayed on Monday.



Scan the QR code or visit aspo.org/2024abstracts to view full poster abstracts and author lists.

Tentoes posters submitted by trainees.

Sunday, March 17

Behavioral Science & Health Communication

1: Biobehavioral Predictors of Mood, Fatigue, and Insomnia after Endometrial Cancer Surgery

Presenter: Elizabeth Ver Hoeve, MA, *University of Wisconsin-Madison*

2: Cancer Screening Status: Predictor of COVID-19 Interest and Vaccination Intention among Older Adult Facebook Users

Presenter: Carrie Miller, PhD, MPH, *Virginia Commonwealth University*

3: Characterizing Inquiries About Immunotherapy and Targeted Therapy: Findings from the National Cancer Institute's Cancer Information Service

Presenter: Robin Vanderpool, DrPH, *National Cancer Institute*

4-T: Empathic Opportunities and Responses in Lung Cancer Patient-Provider Consultations

Presenter: Tara Torres, MA, *University of Arizona*

5: Exploring Secondary Acceptance of HPV Vaccination among Vaccine-Declining Parents

Presenter: William Calo, PhD, *Penn State College of Medicine*

6: Feasibility and Acceptability of a Web-based Tool to Direct Head and Neck Cancer Caregivers to Resources

Presenter: Chandysten Nightingale, PhD, MPH, *Wake Forest University School of Medicine*

7: Leveraging Mobile Health to Improve Oral Chemotherapy Adherence among Women with Breast Cancer: Evidence from a Pilot Randomized Trial

Presenter: Ilana Graetz, PhD, *Emory Rollins School of Public Health*

8: More or Less Screening: Acceptability of Risk-Based Breast Cancer Screening in a Socially Diverse Cohort

Presenter: Anita Karr, MPH, *Columbia University Mailman School of PH*

9-T: Nourishing through Words: Formative Research to Design the Optimization of Adaptive Text Messages to Improve Nutrition for Cancer Survivors (OATS) Study

Presenter: Erin Van Blarigan, ScD, *UCSF*

10: Patient-Clinician Discussion for Clinical Trial as a Potential Cancer Treatment Option: Analysis of HINTS-SEER Data

Presenter: Young-Rock Hong, PhD, MPH, *University of Florida*

11-T: Rise in Consumption of Informational Videos on Social Media Among Rural Adults: Opportunity for Improving HPV Awareness

Presenter: Ashvita Garg, PhD, MPH, MBBS, *Medical University of South Carolina*

12-T: Self-Sampling for Human Papillomavirus (HPV) Testing: Acceptability and Experiences in a U.S. Safety Net Health System

Presenter: Susan Parker, MPH, MD *Anderson Cancer Center*

Cancer Health Disparities

13: "We have to be strong, even when we are weak": A Qualitative Inquiry of Sociocultural Influences of Stress among Black Women at Risk for Aggressive Breast Cancer

Presenter: Samantha Jones, PhD, *Augusta University*

14: A Community-Partnered Approach to Identify and Address Locally Relevant Determinants of Cancer Screening in New York City

Presenter: Perla Chebli, PhD, MPH, *NYU Grossman School of Medicine*

15: A Novel Use of Community Paramedicine to Address Rural/Urban HPV Vaccination Disparities

Presenter: Monica Kasting, PhD, *Purdue University*

16: A Transdisciplinary Approach to Defining Mammographic Quality

Presenter: Kelly Hackett, MPH, *Wisconsin Women's Health Foundation*

17-T: An Analysis of Urban Indian Organizations' Promotion of Cancer Services

Presenter: Byron Hutton, MS, *University of Arizona*

18-T: Assessing and Attenuating the Impact of Selection Bias on Spatial Cluster Detection Studies

Presenter: Joseph Boyle, Ph.D., *Virginia Commonwealth University*

19: Assessment of Cervical Cancer Screening Knowledge, Awareness, and Practices among Tribal Healthcare Staff

Presenter: Danielle Gartner, PhD, MS, *Michigan State University*

20: Associations between Ethnic Enclave Residence and Late-Stage Breast Cancer Diagnosis among Asian American Women

Presenter: Salma Shariff-Marco, PhD, MPH, *University of California, San Francisco*

21-T: Better Dietary Quality is Associated with Improved Survival for Black Women with High-Grade Serous Ovarian Cancer

Presenter: Tsion Armidie, MPH-Epidemiology, *Emory University*

22-T: Breast, Colorectal and Prostate Cancer Incidence among Filipino Americans by Generational Status in the Multiethnic Cohort Study

Presenter: Janine Abe, PhD, *University of Hawaii Cancer Center*

23-T: Colonoscopy Follow-Up to Abnormal FIT in a Large Federally Qualified Health Center: Results from a Patient Navigation Study (PRECISE)

Presenter: Priyanka Gautam, MPH, *Kaiser Permanente CHR*

24-T: Comparing Patient, Provider, and Healthcare Personnel Perspectives on Barriers to Care among Rural Endometrial Cancer Patients: A Qualitative Study

Presenter: Brianna Taffe, MPH, *UNC - Chapel Hill*

25-T: Competing Subsequent Invasive Breast Cancer Risks in Women after Ductal Carcinoma in Situ by Race and Ethnicity: A SEER-based Analysis from 2000 to 2020

Presenter: Alzina Koric, PhD, *Washington University of St. Louis*

26: Correlation between Residential Segregation and Environmental Justice Index at the Census Tract Level in the U.S.

Presenter: Lu Zhang, PhD, *Clemson University*

27: Disparities in Cardiovascular Disease Risk among Older Asian, Native Hawaiian, and Pacific Islanders Lung Cancer Survivors in a Population-based Cohort

Presenter: Yancen Pan, MS, *UCLA Fielding School of Public Health*

28: Drivers of Geographic Variation in Cancer Screening within the Military Health System

Presenter: Joel Segel, PhD, *Penn State University*

29: Effects of Intersectionality on Mammogram Screening on a Racially and Ethnically Diverse Group of Women with Intellectual Disabilities

Presenter: Evelyn Arana-Chicas, DrPH, *Rutgers Cancer Institute*

30: Effects of Rurality, Race, and Ethnicity on HPV and COVID-19 Vaccine Hesitancy Among Young Adults in the Western United States

Presenter: Deanna Kepka, PhD, MPH, *University of Utah/Huntsman Cancer Institute*

31-T: Examining Health Resources and Health Perspectives among Asian Communities in St. Louis, Missouri

Presenter: Bailey Martin-Giacalone, PhD, *Washington University School of Medicine*

32-T: Examining the Impact of Healthy Food Cost and Accessibility on Nutrition Security Status and Food Choice Behaviors among Postmenopausal African American Breast and Endometrial Cancer Survivors

Presenter: Amirah Burton, PhD, MS, *Morehouse School of Medicine*

33-T: Examining the Perspectives of Healthcare Teams on the Implementation of a Hospital-Based Food Prescription Program for Cancer Patients in Safety Net Settings

Presenter: Kylee Laffoon, BS, *UT MD Anderson Cancer Center*

34: Examining the Role of Education and Allostatic Load on Cancer Mortality Risk among Black Men

Presenter: Justin Moore, PhD, *University of Kentucky*

35-T: Factors Associated with Mammography Screening in Asian Americans: A Scoping Review

Presenter: Jingxi Sheng, PhD, *University of Wisconsin-Madison*

36: Feasibility and Acceptability of At-Home HPV Self-Testing for Cervical Cancer Screening among Underserved Women in Alabama - A Pilot Study

Presenter: Shelita Smith, MPH, *University of Alabama at Birmingham*

37: Geographic Accessibility to Healthcare, Ethnic Enclave Residence, and Stage of Diagnosis for Hispanic Adults with Breast, Cervical, and Colorectal Cancer

Presenter: Sandi Pruitt, PhD, *University of Texas Southwestern Medical*

38-T: HPV Vaccination in Under-Resourced Families: The Effects of Social Determinants of Health

Presenter: Marcelo Sleiman Jr, BA, *Georgetown University*

39: Increasing Access to Cancer Screening for Hispanic/Latinx Populations

Presenter: Evelyn Martinez, MPH, *UF Health Cancer Center*

40: Leveraging NCI-Designated Cancer Centers' Community Outreach and Engagement Infrastructure to Advance Community-Driven Priorities Related to the Social Determinants of Health: Feasibility and Preliminary Efficacy of a Financial Literacy Intervention

Presenter: Elizabeth Bouchard, PhD, *Roswell Park Comprehensive Cancer Center*

41-T: Measuring the Impact of an Open Source Data Tool for Cancer Centers

Presenter: Todd Burus, Masters of Applied Statistics, *Univ of Kentucky Markey Cancer Center*

42: Medicaid Enrollment Timing and Cancer Staging, Time to Treatment, and Survival: Examining Cancers of the Breast, Colon, and Lung Using SEER-Medicaid

Presenter: Gabriel Benavidez, PhD, *Baylor University*

43: Multi-Method Approach for Understanding a Cancer Center Catchment Area Needs and Establishing Priorities

Presenter: Natoshia Askelson, MPH, PhD, *University of Iowa*

44: Multilevel Factors Influencing Repeat Colorectal Cancer Screening in a Federally Qualified Health Center: A Qualitative Study

Presenter: Narissa Nonzee, Ph.D., *City of Hope*

45-T: Particulate Matter Exposure Impacts Racial Disparities in Colorectal Cancer Mortality in Metropolitan Detroit

Presenter: Natalie Snider, BS, *Wayne State University*

46: Patterns of Characteristics and Treatment of Early-Onset Colorectal Cancer among Asian Americans and Pacific Islanders

Presenter: Young-Rock Hong, PhD, MPH, *University of Florida*

47-T: Prevalence of Cannabis Use and Motivations for/ against Use in Rural vs Urban/Suburban Cancer Patients Treated at a Single Institution

Presenter: Cristina Truica, MD, *Penn State Cancer Institute*

48: Racial and Ethnic Disparities in Cardiovascular Disease Mortality among Asian American and Pacific Islander Breast Cancer Survivors, 2000-2019

Presenter: Jacqueline B. Vo, PhD, RN, MPH, *National Cancer Institute*

49-T: Racial/Ethnic Disparities in Time from Diagnosis to Treatment for Endometrial Cancer

Presenter: Victoria Rodriguez, MSW, MPH, *University of California, Irvine*

50: Risks of Adverse Health Outcomes Among Older Rural Prostate Cancer Survivors: A SEER-Medicare analysis

Presenter: Esther Chun-Pin Chang, PhD, *University of Utah*

51: Social Determinants of Health Influences on Lung Cancer Surgery Patients' Quality of Life: A Qualitative Study

Presenter: Dede Teteh, DrPH, *Chapman University*

52: Strategies for Advancing Sexual Orientation and Gender Identity (SOGI) Data Collection in Cancer Research: Insights From the Sexual and Gender Minority (SGM) Interest Group of the NCI Cohort Consortium

Presenter: Mandi Pratt-Chapman, PhD, *GW Cancer Center*

53-T: The Association between Educational Attainment and Chronic Stress with Risk of Cancer Mortality among Hispanic Women

Presenter: Cynthia Li, BA, *Medical College of Georgia*

54: The Association between the Heterogeneity of Smoke-Free Laws and Smoking Prevalence and Quit Attempts within the Tobacco Nation

Presenter: Siqi Yang, MPH, *Purdue University*

55: The Role of Social Determinants of Health in Cancer Treatment Inequities among People with HIV and Cancer in the United States

Presenter: Jessica Islam, PhD, MPH, *H. Lee Moffitt Cancer Center*

56: Trends in Uterine Cancer among Premenopausal and Postmenopausal Women in the United States, 2001-2020

Presenter: Victor Adekanmbi, MD, PhD, *The University of Texas Medical Branch at Galveston*

57-T: Underlying Factors Influencing Kidney Cancer Surgical Treatment Disparities in Arizona

Presenter: D'Andre Gomez, *University of Arizona College of Medicine*

58-T: Using a Multilevel Approach to Improve Equity in Cervical Cancer Screening and Follow-up at a Multisite Federally Qualified Health Center

Presenter: Samantha Garcia, PhD, *University of Southern California*

59: Year One Results of a Cluster-Randomized Community Trial to Optimize Colorectal Cancer Screening and Follow-up

Presenter: Elena Martinez, PhD, *University of California, San Diego*

Early Detection & Risk Prediction

60: Acceptability of HPV Take Home Screening: A Qualitative Study of Black Women Living with Type II Diabetes and Social Vulnerability

Presenter: Rahma Mkuu, MPH, PhD, *University of Florida*

61: Associations of Alcohol Consumption with Expression of CD44, CD24 and ALDH1A1 Stem Cell Markers in Benign Breast Biopsy Samples

Presenter: Rulla Tamimi, ScD, *Weill Cornell Medicine*

62-T: Awareness of Human Papillomavirus (HPV) and its Vaccine and Telehealth: Results from the Health Information National Trends Survey (HINTS) 6, 2022 in the United States

Presenter: Manali Desai, MBBS, MPH, *UTHealth Houston*

63-T: Colorectal Cancer Screening Uptake across Age Groups within an Academic Health System

Presenter: Joshua Demb, PhD, MPH, *University of California, San Diego*

64-T: Investigating the Relationship between Self-Rated Health and Colorectal Cancer Screening Behaviors among Men in the United States

Presenter: Ami Sedani, PhD, MPH, *Medical College of Wisconsin*

65: Pathways to Diagnosis for a Diverse Cohort of Ovarian Cancer Patients in North Carolina

Presenter: Caroline Thompson, PhD, MPH, *UNC Chapel Hill*

66: Patterns and Factors Associated with Breast Cancer Detection Methods in California Women

Presenter: Alice Lee, PhD, MPH, *California State University, Fullerton*

67-T: Relationship between Upper Endoscopy Surveillance and Emergency Presentation of Esophageal Adenocarcinoma among Eligible Older Adults

Presenter: Sarah Soppe, MPH, *The University of North Carolina*

68: Poster Withdrawn

69-T: Second Hand Smoking Impacts on Children as a Result of Domestic Smoking - A Pilot Study in Urban India

Presenter: Delfin Lovelina Francis, MDS (PhD - Public Health), *KIIT University, Odisha, India*

70: Understanding the Influence of Perceived Stress and Everyday Discrimination on Prostate Cancer Screening

Presenter: Kevin Kensler, ScD, *Weill Cornell Medicine*

71: Using Implementation Mapping to Prepare for the Implementation of a Hereditary Cancer Clinic for the Clinical Management of Patients at High Risk of Inherited Cancer

Presenter: Caitlin Allen, PhD, MPH, *Medical University of South Carolina*

72: Validity and Reliability of National Health Interview Survey Questions on Cancer Screening

Presenter: Erin Bowles, MPH, *Kaiser Permanente Washington*

Lifestyles Behavior, Energy Balance & Chemoprevention

73-T: Association Between Sleep Duration and Survival Among US and UK Cancer Survivors, NHIS 1999-2019 and UK Biobank 2004-2022

Presenter: Chao Cao, PhD, MPH, *Dana-Farber Cancer Institute*

74-T: Association between Survivor-Caregiver Relationship and Geographical Distance with Lifestyle Behaviors among Participants of a Psychosocial Intervention

Presenter: Samantha Werts-Pelter, MPH, PhD(c), *University of Arizona*

75-T: Association of Diet with Fusobacterium Nucleatum Enrichment and Presence in the Colorectal Tumor-Associated Microbiome

Presenter: Courtney M Hill, MS, *University of Washington*

76-T: Associations between Post-Treatment Dietary Patterns and Quality of Life in Colorectal Cancer Patients

Presenter: Kristen S. Smith, PhD, RD, *Moffitt Cancer Center*

77-T: Associations of Pre-Diagnosis Physical Activity with Treatment Tolerance and Treatment Efficacy in Breast Cancer Patients with Neoadjuvant Chemotherapy

Presenter: Cheryl Thompson, PhD, MPH, *Penn State College of Medicine*

78-T: Demographic and Disease Characteristics Associated with Muscle-Strengthening Activities Among Cancer Survivors

Presenter: Julia Starikovsky, BA, MA, *Northwestern University Feinberg*

79: Hormone Therapy Use and Young-Onset Breast Cancer: A Premenopausal Breast Cancer Collaborative Group Study

Presenter: Katie O'Brien, MSPH, PHD, *NIEHS*

80-T: Incorporating Parental Priorities and Desired Features into an Obesity Risk Reduction Mobile Application

Presenter: Susanna Goggans, Bachelor of Science in Human Nutrition, *University of Kentucky*

81-T: Patterns of E-Cigarette Use by Sexual Orientation and Depression Status among Cancer Survivors: An Analysis of U.S. National Survey Data

Presenter: Jincong Freeman, MPH, MS, *University of Chicago*

82: Perceptions of Participation in a Telehealth Exercise Program Designed for Rural Cancer Survivors with Fatigue: A Qualitative Study

Presenter: Ryan Marker, DPT, PhD, *University of Colorado*

83-T: The Relationship Between Physical Activity, Performance Score, and Clinical Trial Enrollment in Cancer Survivors

Presenter: Kelsey Maslana, BS, MS, *University of Utah*

Molecular Epidemiology & Environment

84-T: Ambient Fine Particulate Matter Exposure and Risk of Ovarian Cancer in the NIH-AARP Diet and Health Study

Presenter: Samantha Ammons, MPH, *National Cancer Institute*

85: CT-assessed Body Composition and Tumor Immunologic Characteristics in Patients with Non-small-cell Lung Cancer

Presenter: Ting-Yuan David Cheng, PhD, *The Ohio State University*

86-T: Environmental Tobacco Smoking and Stomach Cancer in a Chinese Population

Presenter: Yue Wang, Bachelor of Medical Science, *University of California, Los Angeles*

87: Helicobacter Infection: A Risk Factor for Biliary Cancer?

Presenter: Gwen Murphy, PhD MPH, *Imperial College London*

88: Poster Withdrawn

89-T: Occupational-Related Exposure to Benzene and Risk of Breast Cancer: Systematic Review and Meta-analysis

Presenter: Vincent DeStefano, BE, *Stony Brook Medicine*

90-T: Occupational-Related Exposure to Benzene and Risk of Female Genital Cancers: Systematic Review and Meta-analysis
Presenter: Vincent DeStefano, BE, *Stonybrook Medicine*

Survivorship & Health Outcomes/ Comparative Effectiveness Research

91: A Survey of Cancer Networks in the US: Goals, Composition, Resources, and Evaluation
Presenter: Mary Charlton, PhD, *University of Iowa*

92: Access to and Utilization of Endocrine Therapy among Breast Cancer Survivors in Botswana
Presenter: Racquel Kohler, PhD, MSPH, *Rutgers Cancer Institute of New Jersey*

93-T: Changes in Cancer-Related Fatigue Following a Videoconference Intervention for Colorectal Cancer Survivors
Presenter: Emma Gomes, Bachelor of Science, Kinesiology, *Colorado State University*

94: Comorbidity Burden and Health-Related Quality of Life in Men with Advanced Prostate Cancer
Presenter: Roberto Benzo, PhD MS, *The Ohio State University*

95-T: Desire for Future Children and Interest in Consultation with a Fertility Specialist among Adolescent and Young Adult (AYA) Cancer Patients
Presenter: Paige Lake, MPH, *Moffitt Cancer Center*

96-T: DXA-derived Visceral and Subcutaneous Adipose Tissue Association with Postmenopausal Breast Cancer Mortality
Presenter: Dylan Decker, BA, *University of Arizona*

97: Feasibility and Acceptability of Virtual Functional Performance Testing in Multi-site Adaptive Trial of a Technology-based EHR-Integrated Physical Activity Intervention in Breast & Endometrial Cancer Survivors (MyActivity) at Baseline
Presenter: Jacqueline (Jackie) Alexander, Bachelor's of Science in Kinesiology, *Northwestern University*

98-T: Feasibility of Dried Blood Spot Sample Collection in an mHealth Physical Activity Promotion Intervention for Breast Cancer Survivors
Presenter: Kristina Hasanaj, PhD, *Northwestern University*

99: Health Insurance among Patients and Survivors of Adolescent and Young Adult Cancers Before and During the COVID-19 Pandemic
Presenter: Anne Kirchhoff, PhD, MPH, *Huntsman Cancer Institute*

100: Mediating Effects of Mental and Physical Health on the Association between Chronic Disease Conditions and Colorectal Cancer Screening Utilization among Breast Cancer Survivors
Presenter: Meng-Han Tsai, PhD, *Augusta University*

101-T: Post-Cancer Diagnosis Cannabis Use and its Association with Health Status and Quality of Life
Presenter: Nasim Kasiri, Master of Public Health - Epidemiology, *San Diego State University*

102-T: Prospective Associations of Adiposity with Health-Related Quality of Life during Breast Cancer Survivorship among Black Women
Presenter: Carola Sánchez-Díaz, PhD, *Rutgers Cancer Institute of New Jersey*

103-T: Risk of Chronic Disease Outcomes among South Asian Cancer Survivors
Presenter: Elizabeth Hibler, PhD, MPH, *Northwestern University*

104-T: Role of a Post-Diagnostic Plant-Based Diet on Mortality Following a Breast Cancer Diagnosis
Presenter: Yiyang Yue, PhD candidate, *Harvard School of Public Health*

105-T: The Gut Microbiome and Onset of Cachexia in Colorectal Cancer Patients
Presenter: Mmadili Ilozumba, PhD, MSPH, *Huntsman Cancer Institute*

106-T: Transforming the Research Process through Bidirectional Engagement in Search of a Cure: Community Scientists as Brokers of Diversity and Patient-Driven Impact
Presenter: Zul Surani, *Cedars Sinai Cancer Center - COE*

107: Trends in Patients Characteristics, Treatment, and Outcomes of Endometrial Cancer in the United States from 2005 to 2020
Presenter: Victor Adekanmbi, MD, PhD, *The University of Texas Medical Branch*

108-T: Unmet Needs among Long Term Breast Cancer Survivors in the Carolina Breast Cancer Study

Presenter: Rina Yarosh, MPH, *University of North Carolina*

109: Using Natural Language Processing and Machine Learning to Identify Clinical and Social Determinants of Survivorship Care Engagement for Childhood, Adolescent, and Young Adult Cancer Survivors

Presenter: Erin Mobley, PhD, MPH, *University of Florida*

Monday, March 18

Behavioral Science & Health Communication

110: A Preliminary Evaluation of the Clinical Trial Referral Ambassadors Program to Promote Clinical Trial Referrals within Rural Community Hospitals

Presenter: Jerod Stapleton, PhD, *University of Kentucky*

111: Cancer Patients' Use of the Internet and Social Media for Cancer Information and Perceived Exposure to Cancer Misinformation

Presenter: Echo Warner, PhD, MPH, *University of Utah*

112: Characteristics Associated with Acceptability of Self-Testing for Human Papillomavirus Testing among Low-Income Women

Presenter: Erika Biederman, PhD, BSN, *Indiana University School of Nursing*

113: Evaluation of the Community Health Worker-Delivered Salud En Mis Manos (SEMM) Intervention: Comparing In-Person and Telephone-Based Behavioral Education Participation on Increase in Breast and Cervical Cancer Screening and HPV Vaccination Among Medically Underserved Latinas

Presenter: Lara Savas, PhD, *UTHealth Houston School of Public Health*

114: Evaluation of the Implementation Studio on Cancer Screening in Hispanic Communities

Presenter: Linda Ko, PhD, *University of Washington*

115: Poster Withdrawn

116-T: Impact of Trust on Cancer Screening: Findings from the 2022 Health Information National Trends Survey (HINTS)

Presenter: Maria Rincon, PhD, MPH, *National Cancer Institute*

117-T: Influence of Healthcare Provider Recommendations on HPV Vaccination Intentions and Identification of Barriers Among Young Adults in Missouri

Presenter: Ifeoma Obionu, MBBS, MSc, FWACP, *Saint Louis University*

118: Interest in Cancer Prevention and Screening among Older Adults on Facebook: Digital Health Opportunities

Presenter: Carrie Miller, PhD, MPH, *Virginia Commonwealth University*

119-T: Summer Research Activities and Student Trajectories into Cancer Prevention Careers

Presenter: Joann Jung, high school student, *University of Texas MD Anderson Cancer Center*

120: The Role of Family Support in Promoting HPV Vaccination among Parents of 11- to 12-Year-olds

Presenter: Georges Khalil, MPH, PhD, *University of Florida*

121: Using Text Messaging to Ascertain Eligibility for Lung Cancer Screening: Unveiling the Limits of Single Channel of Communication

Presenter: Jennifer Elston Lafata, PhD, *University of North Carolina-Chapel Hill*

Cancer Health Disparities

122-T: A CFIR Guided Qualitative Study to Identify Factors Influencing the Implementation of an Evidence-Based Breast and Cervical Cancer Prevention and Early Detection Behavioral Health Program

Presenter: Crystal Costa, MPH, *UT Health Science Center at Houston*

123-T: A Systematic Review on Tobacco Use among Indian Tribal Population

Presenter: Delfin Lovelina Francis, MDS (PhD - Public Health), *KIIT University, Odisha, India*

124: A Tailored Flyer "Only" May Not Increase the Colorectal Cancer Screening among Rural Residents? Lessons Learned and Cost Implications From a Pilot Randomized Clinical Trial

Presenter: Shinobu Watanabe-Galloway, PhD, *University of Nebraska Medical Center*

125-T: Addressing Gastric Cancer Disparity in American Indian People: Associations between Diet Patterns and Helicobacter Pylori Infection in Navajo Adults

Presenter: Dornell Pete, PhD, MPH, *Fred Hutchinson Cancer Center*

126-T: Association of Neighborhood Deprivation and Lung Cancer in African and European American Men in the NCI-Maryland Lung Cancer Case-Control Study

Presenter: Catherine Pichardo, PhD, *National Cancer Institute*

127-T: Associations of Area-Level Socioeconomic Measures with Advanced Stage at Diagnosis of Anal Cancer among Adults with and without HIV in the US: An Analysis of the NCDB

Presenter: Sarah Commaroto, BA, *Morsani College of Medicine*

128: Barriers and Facilitators to Cervical Cancer Screening Uptake for Latina Women: A Systematic Review

Presenter: Selena Ortega, MS in Medical Sciences, HOIS, *University of Florida*

129-T: Behavioral Profile and Programming Needs of Female Adolescent and Young Cancer Survivors: Results from the Horizon Survey

Presenter: Alexis Woods Barr, PhD, MS, *Designs By Alexis Letese*

130: Bridging the Gap in HPV Screening: A Qualitative Look at the Acceptability of Self-Collected HPV Testing in Black and Latinx Communities

Presenter: Emilie Glass, M.A., *University of Illinois Chicago*

131-T: Building Community Capacity to Decrease the Financial Burden of Cancer Care for Uninsured Individuals in Pima County, Arizona

Presenter: Jonathan Smith, MPH, MA, *University of Arizona*

132-T: Cancer Mortality among Hispanic Groups in the US, by Birthplace (2003-2017)

Presenter: Yuelin He, MS, BS, *UNC Chapel Hill*

133-T: Changes in Allostatic Load Following a Randomized Lifestyle Intervention among African American Breast Cancer Survivors

Presenter: Iwalola Awoyinka, PhD MPH, *Medical College of Wisconsin*

134: Community Health Educator (CHE) Led Educational Intervention to Increase CRC Screening Awareness among Rural Communities in Northern Wisconsin

Presenter: Cibele Barbosa Carroll, MD, PhD, MPH, *UW Carbone Cancer Center*

135-T: Epidemiologic Predictors of Hormone Receptor Staining Levels in African American Women with HR+/HER2- Breast Cancer

Presenter: Abigail Fielder, B.A., *Wayne State University*

136: Evaluation of Factors Influencing the Implementation of Evidence-Based Strategies for the Prevention of Infection-Related Cancers in Asian American Communities

Presenter: Matthew Lee, DrPH, MPH, *NYU Grossman School of Medicine*

137-T: Examining Rural/Urban and Socioeconomic Gaps in Gene Expression Profiling Uptake among Early-Stage Breast Cancer Patients Who Received Neoadjuvant Systemic Therapy

Presenter: Jincong Freeman, MPH, MS, *University of Chicago*

138: Experiences of Healthcare Racial/Ethnic Discrimination, Trust in Healthcare Providers and Systems, and Report of Material Hardship

Presenter: Marlene Camacho-Rivera, ScD MPH, *SUNY Downstate Health Sciences University*

139: Exploring Early Initiation of HPV Vaccination in a Rural, Midwestern State

Presenter: Natoshia Askelson, MPH, PhD, *University of Iowa*

140: Faith in Action! The Development of a Church-Based Navigation Model to Increase Breast Cancer Screening in Korean Women

Presenter: Dong Hee Kim, MPH, *Cedars Sinai Cancer*

141: Food Insecurity Among Cancer Survivors in New York State: Lessons from the COVID-19 Pandemic

Presenter: Erica Phillips, MD, MS, *Weill Cornell Medicine*

142: Formative Research to Support Development of Digital Tools to Increase Referral and Enrollment to Therapeutic Clinical Trials among Black/African American and Hispanic Patients at an NCI Designated Comprehensive Cancer Center

Presenter: Lindsay Fuzzell, PhD, *Moffitt Cancer Center*

143-T: Geospatial Accessibility to Radiation Oncologists and the Prognosis among Women with Ductal Carcinoma in Situ of the Breast

Presenter: Oumarou Nabi, PhD, *Washington University in Saint Louis*

144: Go Fund Yourself: A Content Analysis of LGBTQ+ Cancer Crowdfunding

Presenter: Cindy Turner, MPH, *University of Utah*

145: Hmong Promoting Vaccines: A Pilot to Evaluate Dissemination and Implementation Strategies for a Culturally-Tailored Website

Presenter: Serena Xiong, PhD, MPH, *University of Minnesota Medical School*

146: Identifying and Understanding the Prevalence of Social Risk Factors in an Urban Oncology Setting

Presenter: Arianna Milicia, BS, *MedStar Health Research Institute*

147: Impact of County-Level Income and Urbanicity on Cancer Mortality for Asian American and Pacific Islander individuals in the US

Presenter: Paloma Mitra, B.A., *National Cancer Institute*

148: Incongruencies in a National Rural Urban Categorization Scheme and Implications for Cancer Health Outcomes and NCI Cancer Centers

Presenter: Jaclyn Hall, PhD, *University of Florida*

149-T: Integration of Cultural Wisdom and Knowledge into Obesity and Cancer Prevention Interventions for Diverse Latina Women

Presenter: Jacqueline Guzman, PhD, *Medical College of Wisconsin*

150-T: Investigating Multilevel Factors Influencing Cancer Screening Among Refugee Populations in the United States: A Systematic Review.

Presenter: Sadia Shah, MPH, MBBS, *Virginia Commonwealth University*

151: Lung Cancer Risk Reduction and Screening among Appalachian Women: A Community-Engaged Mixed Method Study

Presenter: Jessica Thompson, PhD, MEd, *University of Kentucky*

152-T: Motherhood and Receipt of Treatment: A Population-Based Study of Young Women with Breast Cancer

Presenter: Quiera Booker, PhD, MPH, *National Cancer Institute*

153: Persistent Poverty and Access to Cancer-Related Healthcare: Novel Census Tract-Level Evidence

Presenter: Jennifer Moss, PhD, *Penn State College of Medicine*

154-T: Population-Based Precision Lung Cancer Prevention for Health Equity Promotion: Identifying Population Segments with Lung Cancer Disparities to Increase Screening Recruitment

Presenter: Ming Lee, MD, PhD, *Sylvester Comprehensive Cancer Center*

155: Project SCREEN (Strengthening Community Reach and Equity through Engaging Neighborhoods): Development of a Neighborhood Health Ambassador Network to Address Cancer Health Disparities in the National Capital Region

Presenter: Mandi Chapman, PhD, *GW Cancer Center*

156: Promoting HPV Vaccination Among Rural Families: Parents' Receptivity to HPV Messaging

Presenter: Carla Fisher, PhD, *University of Florida*

157: Race Differences in Symptom Burden among Women with Breast Cancer on Adjuvant Endocrine Therapy: A Post Hoc Analysis of a Randomized Control Trial

Presenter: Xin Hu, PhD, *University of Virginia*

158-T: Racial and Ethnic Differences in Lung Cancer Incidence Among Those Who Quit Smoking: the Multiethnic Cohort Study

Presenter: Cherie Guillermo, PhD, MS, *University of Hawaii Cancer Center*

159: Racial and Ethnic Differences in the Adoption of Opportunistic Salpingectomy for Ovarian Cancer Prevention in NYC

Presenter: Rulla Tamimi, ScD, *Weill Cornell Medicine*

160: Racial/Ethnic Differences in Unmet Social Needs, Trust & Discrimination

Presenter: Kasim Ortiz, PhD, MS, *Drexel University*

161: Rural Racial Disparities and Barriers in Mammography Utilization among Medicare Beneficiaries: A Longitudinal Study

Presenter: Zhaoli Liu, PhD, *The University of Texas at Arlington*

162-T: Sociodemographic Factors Associated with Fertility Experiences among Diverse Adolescent and Young Adult Cancer Survivors: A Population-Based Study

Presenter: Julia Stal, PhD(c), *University of Southern California*

163: Sociodemographic Inequities in Overall Survival among Younger and Older Women with Cervical Cancer

Presenter: Hunter Holt, MD, MAS, *University of Illinois, Chicago*

164: The Association between Local Flavor Restrictions and Tobacco and E-cigarette Use among California Adolescents Ages 12-17

Presenter: Siqi Yang, MPH, *Purdue University*

165-T: The Hidden Costs of Colonoscopy: Rural Barriers to Preventative Care in Southern Illinois

Presenter: Alzina Koric, PhD, *Washington University of St. Louis*

166: Towards the Elimination of Cancer Health Disparities in Mexico: Leveraging Implementation Science to Optimize Strategies for Cancer Control

Presenter: Maria Fernandez, PhD, *UTHealth Houston*

167: Utilizing Peer Educators to Increase Black Males' Intentions to Seek Genetic Testing for Prostate Cancer: Results of a Randomized Controlled Trial

Presenter: Amy Leader, DrPH, MPH, *Thomas Jefferson University*

Early Detection & Risk Prediction

168: "I know that I get treated differently:" The Future of Screening for Early Onset Breast Cancer in Black Women

Presenter: Lauren Houghton, PhD, MSc, *Columbia University*

169-T: Breast Density Notification Laws: Impact on Supplemental Breast Cancer Screening

Presenter: Victoria Foster, BS, *University of Wisconsin-Madison*

170: Characteristics and Patterns of Genomic Testing among Cancer Patients: Analysis of HINTS-SEER

Presenter: Young-Rock Hong, PhD, MPH, *University of Florida*

171: Effectiveness of a Multicomponent Intervention to Increase Colorectal Cancer Screening Completion among 45-49-Year-Olds: An Interrupted Time Series Analysis

Presenter: Sean McClellan, MD, MAS, *University of Illinois, Chicago*

172-T: Evaluating the Impact of Mailed Fecal Immunochemical Test Outreach in Practice with a Target Trial Framework

Presenter: Joshua Demb, PhD, MPH, *University of California, San Diego*

173-T: Geospatial Analytics of Supply-Demand Gaps to Increase Utilization of Lung Cancer Screening

Presenter: Ming Lee, MD, PhD, *Sylvester Comprehensive Cancer Center*

174: How Often (and for whom) Is Cancer Diagnosed as an Emergency?

Presenter: Caroline Thompson, PhD, MPH, *UNC Chapel Hill*

175: Modified Mammographic Density Measures for Breast Cancer Risk Assessment in an Intermediate-Risk Population

Presenter: Gordon Watt, PhD, *Memorial Sloan Kettering Cancer Center*

176: Proximity to Lung Cancer Screening Services and Lung Cancer Diagnosis

Presenter: Meghan Tipre, DrPH, *University of Pittsburgh*

177-T: Risk Analysis of Patients with documented BMI with or without Opioid Dependence for the Outcomes of Primary and Metastatic Brain and Spinal Cord/Cranial Nerve Tumors: A Retrospective Cohort Study

Presenter: Jinpyo Hong, Bachelor of Science, *Penn State College of Medicine*

178: Video Intervention Improves Patient Knowledge on Timeliness to Return for Annual Lung Cancer Screening

Presenter: Karen Wernli, MS PHD, *KPWHRI*

179: What Do Cancer Genetic Healthcare Providers Want Us to Know about Variant Reclassification and Recontact that We Are Not Asking? A Thematic Analysis of Open-Ended Survey Responses

Presenter: Sukh Makhnoon, PhD, MS, *UT Southwestern Medical Center*

Global Cancer Research

180: Poster Withdrawn

181: Developing and Implementing a Cancer Awareness Campaign in Rural Botswana

Presenter: Racquel Kohler, PhD, MSPH, *Cancer Institute of New Jersey*

182-T: Feasibility of Using a Mobile Health App for Cervical Cancer Screening in the Democratic Republic of the Congo

Presenter: Jonas Ndeke, MD, MPH, *Indiana University Bloomington*

183: Navigating Cervical Cancer Treatment: Experiences of Women Living in Rural Kenya

Presenter: Rahma Mkuu, MPH, PhD, *University of Florida*

184: Validation of a Tool for Measuring Breast Cancer Awareness Among Brazilian Women

Presenter: Priscilla B. Pujatti, PhD, *Faculdade de Medicina de Barbacena*

Lifestyles Behavior, Energy Balance & Chemoprevention

185-T: Alcohol Intake and Renal Cell Cancer Risk: A Pooled Analysis of 27 Cohort Studies

Presenter: Jingwen Dong, MBBS, *Harvard TH Chan School of Public Health*

186-T: Associations of Weekday and Weekend Sleep Duration with Cancer Risk among US Adults in the Cancer Prevention Study-3 Cohort

Presenter: Sidney Donzella, MPH, *University of Washington*

187-T: Calibrated Dietary Pattern and Cancer Risk in the Women's Health Initiative Cohorts

Presenter: Xiaochen Zhang, PhD, MPH, MBBS, *Fred Hutchinson Cancer Center*

188-T: Coffee and Tea Consumption and Risk of Head and Neck Cancer: An Updated Pooled Analysis in the International Head and Neck Cancer Epidemiology (INHANCE) Consortium

Presenter: Timothy Nguyen, MPH, *UCLA Fielding School of Public Health*

189-T: Diet Quality Among Adult Cancer Survivors

Presenter: Adaora Ezeani, MD, MPH, *National Cancer Institute*

190-T: Dietary Interventions for Cancer Survivors and Their Families or Caregivers: A Systematic Review

Presenter: Jingle Xu, MSN, MS, *University of North Carolina Chapel Hill*

191-T: Feasibility and Acceptability of a Multi-site Adaptive Trial of a Technology-based EHR-Integrated Physical Activity Intervention in Breast & Endometrial Cancer Survivors (MyActivity) at 6-months

Presenter: Payton Solk, MS, *Northwestern Feinberg School of Medicine*

192-T: Fruits, Vegetables and Risk of Breast Cancer Subtypes among 23 Cohort Studies in the Pooling Project of Prospective Studies of Diet and Cancer

Presenter: Emily Riseberg, MPH, *Harvard TH Chan School of Public Health*

193-T: Increased Symptom Burden Predicts Individuals' Physical Activity Throughout the Day During Chemotherapy for Breast Cancer

Presenter: Shirlene Wang, PhD, *Northwestern University*

194: Physical Activity and Biomarkers of Breast Cancer Risk in Adolescent Daughters and Their Mothers

Presenter: Rebecca Kehm, PhD, MPH, *Columbia University*

195: The Epidemiology of Young Lung Cancer: Interim Analysis of Risk Factors and Genetic Mutations (NCT04640259)

Presenter: Marisa Bittoni, MS, PhD, *The Ohio State University*

196: Weight Management Intentions and Beliefs among Breast and Endometrial Cancer Survivors with Obesity

Presenter: Jean Reading, PhD, *Northwestern University Feinberg SOM*

Survivorship & Health Outcomes/ Comparative Effectiveness Research

197-T: Association between Malnutrition and Patient Reported Outcomes in a Diverse Sample of Adult Ambulatory Oncology Patients

Presenter: Melissa Lopez-Pentecost, PhD, MS, RDN, *University of Miami*

198: Associations of Food Insecurity with Overall and Disease-Specific Mortality among US Cancer Survivors

Presenter: Young-Rock Hong, PhD, MPH, *University of Florida*

199-T: Associations of Phenotypic Aging with Low Muscle Mass and Mortality in Cancer Survivors

Presenter: Livingstone Aduse-Poku, BSN, MPH, *University of Florida*

200-T: Binge Eating and Weight Control Behaviors in Young Adult Cancer Survivors

Presenter: Charleen Theroux, BA, *University of Southern California*

201-T: Comparison of Financial Hardship Associated with Cancer between Medicare Advantage vs. Traditional Medicare Programs

Presenter: Jiamin Hu, MPH, *University of Florida*

202: Differences in Employment Outcomes and Food Insecurity Among Colorectal and Breast Cancer Patients by Age

Presenter: Maddy Zonana, BA, MPH Candidate, *Columbia University*

203-T: Empowerment, Peer Support, and Patient Navigation in Breast Cancer Survivorship: Implications for Community Cancer Control

Presenter: Marcelo Sleiman Jr, BA, *Georgetown University*

204-T: Examining Coping Strategies as Moderators of Change in Depressive Symptoms: Secondary Data Analyses from COPE-D, a Collaborative Care Intervention for Underserved Individuals with Cancer

Presenter: Taylor Nicholas, MA, *University of Arizona*

205-T: Feasibility and Effects of a 6-Month Home-based Aerobic and Resistance Exercise Intervention Among Foregut Cancer Survivors

Presenter: Erica Schleicher, MS, *University of Alabama at Birmingham UAB*

206: Impact of Age, Marital Status, Smoking, and Alcohol Consumption on Urinary and Sexual Function in Prostate Cancer Patients Treated with Radical Prostatectomy: A Prospective Cohort Study

Presenter: Saira Khan, PhD, MPH, *Washington University in St. Louis*

207-T: Moderators of a Web-based Lifestyle Intervention on Diet, Physical Activity, and Weight in Cancer Survivors and their Partners: The DUET Trial

Presenter: Harleen Kaur, MS, *University of Alabama at Birmingham*

208: Persistent Opioid Use and Opioid Use Disorder in a Large, Real-World Sample of AYA Cancer Survivors

Presenter: Andrea Betts, PhD, MPH, *UTHealth Houston School of Public Health*

209: Pilot Study: Green Tea Extract and Duloxetine to Mitigate Painful Oxaliplatin-Induced Peripheral Neuropathy in a Rat-Pain Model

Presenter: Michael Daniel, PhD, *University of Alabama at Birmingham*

210: Reduced Risk of Contralateral Breast Cancer after Adjuvant Endocrine Therapy among Patients Treated for Primary Estrogen Receptor-Positive Breast Cancer in a Community Setting

Presenter: Gretchen Gierach, PhD, MPH, *National Cancer Institute*

211-T: Reproductive Outcomes among Male Adolescents and Young Adults with Cancer in Texas, 1995-2016

Presenter: Jennifer Wang, MPH, *UTHealth Houston*

212-T: Risk of Cardiovascular Diseases in Kidney Cancer: Large, Nationally Representative Population-Based Retrospective Cohort Study

Presenter: Minji Jung, PharmD, PhD, *Stanford University*

213-T: Symptom Assessment in an Early-Stage Lung Cancer Survivorship Clinic: Outcomes, Usage, and Referral Characteristics

Presenter: Sarah Price, PhD, *Wake Forest University*

214-T: The Effect of Mediterranean Diet Adherence on the Relationship between Cognitive Performance and Cancer Survivorship

Presenter: Andrew McLeod, MS, PhD, *University of Illinois Chicago*

**Rutgers Cancer Institute
of New Jersey**

is proud to support the
**American Society
of Preventive Oncology**
for its continued commitment
to cancer prevention and control.



As New Jersey's only National Cancer Institute (NCI) – designated Comprehensive Cancer Center, Rutgers Cancer Institute of New Jersey and its team of internationally recognized physicians and researchers is driven by a singular focus and mission, to help individuals fight cancer. Through research and cutting-edge treatments we are accomplishing this mission, in addition to addressing cancer prevention and education, in partnership with RWJBarnabas Health.

The coveted NCI Comprehensive Cancer Center designation, awarded to only an elite group of such centers nationwide, is granted competitively to institutions characterized by their scientific leadership, resources, and the depth and breadth of an outstanding track record of research discoveries in basic, clinical, and population science as well as the ability to translate these findings to benefit cancer patients.





PennState Cancer Institute

Penn State Cancer Institute is proud to support the
American Society of Preventive Oncology Annual Meeting
and wishes all the best to our faculty and trainees
presenting research this week!

Learn more about Penn State
Cancer Institute research at
cancer.psu.edu/research



The University of Illinois Cancer Center Care for Communities, Science for the World



Community outreach and engagement
are the *heart* of our mission.

Located on the campus of the University of Illinois Chicago (UIC), our science is rooted in erasing cancer health disparities in the diverse communities we serve throughout Cook County and in the state.

The impact of our research in preventing, screening and treating cancer leads to lifesaving, equitable precision cancer care at UI Health (the academic medical center at UIC) and scientific discoveries that benefit all Illinois communities and beyond.



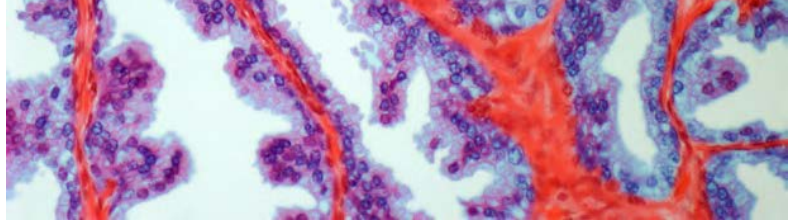
 UI Health | 
UNIVERSITY OF ILLINOIS
CANCER CENTER

Help Us, Help You Beat Cancer In Illinois

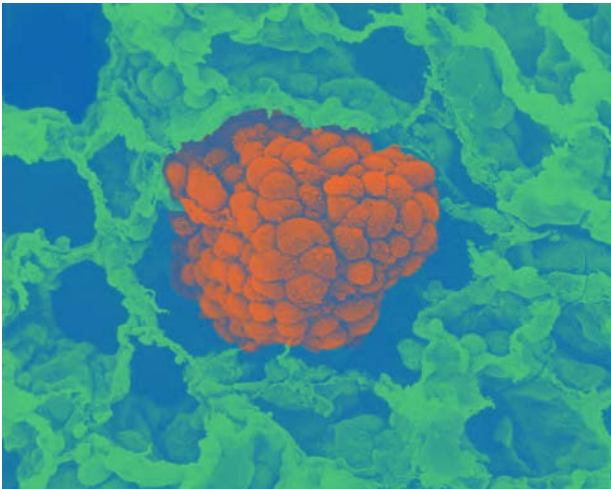
818 South Wolcott Avenue | Chicago, IL 60622
312-413-5598 | cancernews@uic.edu

cancer.uillinois.edu





Cancer breakthroughs take time.

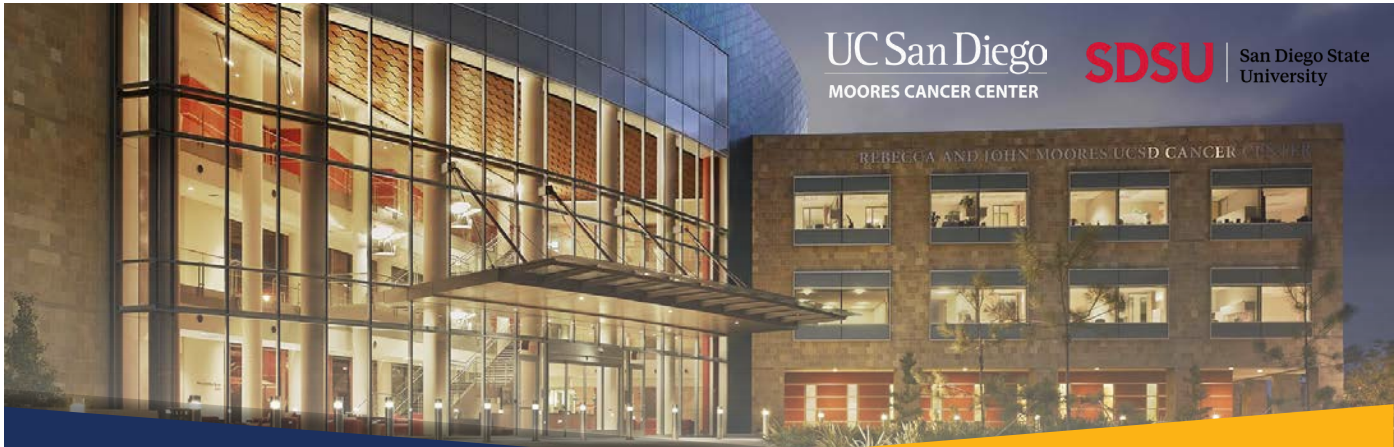


That's why we work at
such a furious pace.

At Johnson & Johnson, we are working on developing treatments that work with the natural defenses of the body in order to halt the growth of cancers such as multiple myeloma. Everything we do gets us closer to a future where cancer is a thing of the past.

Johnson&Johnson

© Janssen Biotech, Inc. 2024 02/24 cp-426399v1



The UC San Diego Moores Cancer Center's Cancer Control Program (CCP) and Community Outreach and Engagement (COE) are dedicated to advancing ASPO's vision for cancer prevention and control, striving to reduce the cancer burden and promote health equity in San Diego County and beyond.



Elena Martinez, PhD

Sam M. Walton Endowed Chair for Cancer Research
Professor, Herbert Wertheim School of Public Health and Human Longevity Science
Associate Director, Population Sciences, Disparities and Community Engagement



Corinne McDaniels-Davidson, PhD
COE Deputy Director, San Diego State University



Samir Gupta, MD, MScS, AGAF
CCP Co-Lead, UC San Diego

Hala Madanat, PhD
Vice President for Research and Innovation, San Diego State University



Mateo Banegas, PhD
CCP-COE Liaison, UC San Diego



Noe Crespo, PhD
CCP Co-Lead, San Diego State University



Jesse Nodora, DrPH
COE Leadership, UC San Diego

Humberto Parada, PhD
ASPO Special Interest Group Co-Chair, San Diego State University



Margaux Stack-Babich, MPH
COE Manager & 2024 ASPO Planning Committee, UC San Diego



 @UCSDCancer_COE  moorescancercenter.ucsd.edu

One goal: ~~Cancer~~[®]

At MD Anderson Cancer Center, our sole focus is ending cancer, and that means preventing it, too. For 45 years, cancer prevention has been inscribed in our mission, so this year we commemorate all that's been achieved in the field by our faculty and their teams, as well as everyone within the American Society of Preventive Oncology (ASPO).

MD Anderson key prevention milestones

- 1978** Charles A. LeMaistre, M.D., made cancer prevention equal to patient care, research and education in the institution's mission, and his vision was endorsed by the Texas Legislature.
- 1989** The Cancer Prevention Center was founded to focus on evidence-based, high-quality cancer screening and preventive services.
- 1994** The Division of Cancer Prevention was formed to advance research in behavioral science, epidemiology and clinical cancer prevention.
- 2004 - 2014** Prevention efforts expanded to include population sciences with an intentional focus on eliminating disparities; understanding cancer care delivery and related measurements of quality and outcomes; and implementing population level, evidence-based, cancer prevention interventions in the community.

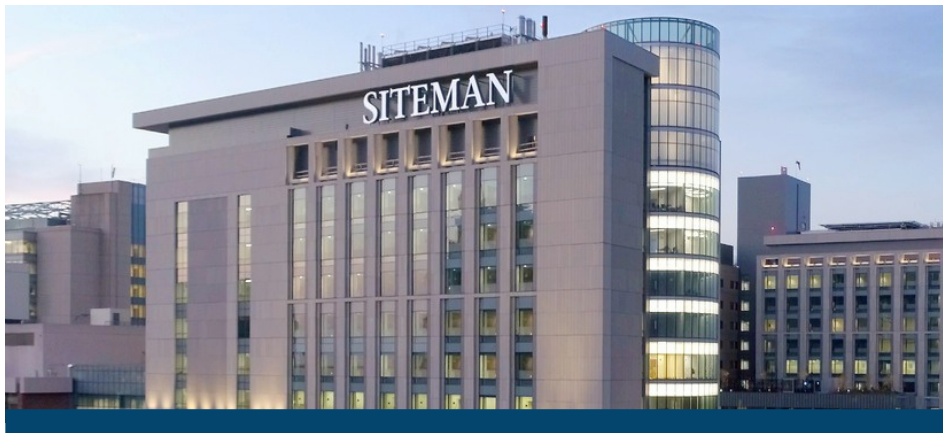
As we look to 2024 and beyond, we are inspired by the countless opportunities to further extend the reach of cancer prevention. Examples include:

The EndTobacco[®] program, an institutional commitment to eliminate tobacco.

Be Well Communities[™], a place-based strategy for comprehensive, evidence-informed cancer prevention and control that promotes community-driven health and wellness.

Project ECHO, a bi-directional, case-based, telementoring platform to better connect MD Anderson clinicians with frontline providers working in medically underserved communities.

Today we celebrate the myriad collaborative successes that have advanced cancer prevention and control science and practices geared toward Making Cancer History[®].



Washington University in St. Louis
SCHOOL OF MEDICINE

Public Health Sciences

NOW HIRING

Postdoctoral Research Fellowship & Open Rank Faculty Opportunities

Division of Public Health Sciences

Washington University School of Medicine's Division of Public Health Sciences broadens the scope of population-based research by providing a platform for our investigators to collaborate on projects affecting clinical care and outcomes. Our multidisciplinary faculty conduct world-leading research on a wide range of health issues including disease and cancer prevention, population health, and improving the quality and access to health care in Missouri and beyond. Current faculty includes epidemiologists, statisticians, behavioral scientists, economists, health communication scientists, and more, who address a range of population health challenges. Faculty from other departments and schools have secondary appointments in our division.



Open Rank Faculty Opportunities

The Division of Public Health Sciences invites applications for a tenured or tenure-eligible faculty position at the rank of Assistant, Associate, or Full professor to conduct research in the field of racial and socioeconomic cancer disparities. This includes inequities in cancer incidence, health-related quality of life, and/or survival. Our high-priority scientific research ranges across biology to genomics, to social determinants of health, implementation science, and population sciences.

Applicants should send the following information to **PHSfaculty@wustl.edu**:

Cover letter, curriculum vitae, list of professional references



Postdoctoral Research Fellowship

The T32 Transdisciplinary Cancer Prevention and Control Training Program is a unique asset to the school and region, as it prepares both PhD and MD researchers to be independent investigators in transdisciplinary research for cancer prevention and control. We welcome applicants on a rolling basis in any relevant research area and discipline. High priority areas include cancer disparities and health equity, community-based and community-engaged research, epidemiology, shared decision making, implementation science, and social determinants of health.

- Postdoc positions are partially funded by a T32 grant (T32CA190194) from the NCI, with annual stipend starting at \$56,880 depending on experience, for 2-3 years of training.
- Support for tuition, books, software, conference travel, and research is available.
- Washington University offers excellent benefits.
- Dedicated mentoring and career development. Our trainees have a strong record of funding and finding faculty positions.

Applicants should send the following to **PHSpostdoc@wustl.edu**: Cover letter, curriculum vitae, list of professional references

 PHSpostdoc@wustl.edu PHSfaculty@wustl.edu	 600 S. Taylor Avenue, 2nd Floor St. Louis, MO 63110	 publichealthsciences.wustl.edu
--	--	------------------------------------

POST-DOCTORAL FELLOWSHIP AVAILABLE

Cancer Health Equity and Career Development Program

This National Cancer Institute-funded fellowship provides preparation to pursue an independent academic research career in cancer prevention, diagnosis, treatment, and survivorship.

Trainees will work with established investigators and will be expected to develop research proposals, produce publications, and work with a multidisciplinary team.

Program mentoring teams bridge expertise in cancer research as it relates to behavioral medicine, health policy, nutrition science, population health, biomarkers, health equity, and epidemiologic methods.

For more information and application requirements, visit cecdp-ihrp.uic.edu

To schedule a meeting during the conference, contact Kenzie Ferguson at cecdp@uic.edu



THE ONLY NCI DESIGNATED COMPREHENSIVE CANCER CENTER BASED IN FLORIDA

INNOVATORS OF TOMORROW SYMPOSIUM

PRESENT YOUR RESEARCH AND LEARN ABOUT BECOMING A

postdoctoral fellow!

CONTRIBUTE TO THE PREVENTION AND CURE OF CANCER IN:

- Cancer Biology & Evolution
- Health Outcomes & Behavior
- Cancer Epidemiology
- Molecular Medicine
- Immuno-Oncology

Present your research, meet the faculty, explore downtown Tampa, and more!

Tampa Bay - A great place to live, work, and play!

Who is eligible:

- Doctoral students within two years of graduating
- Doctoral graduates within one year of graduation

What's included:

- Roundtrip domestic flight to Tampa International Airport
- Two-night stay in a private hotel room
- Meals

Learn more and apply: Moffitt.org/MIOT

Save the Date!

49th Annual Meeting

April 6-8, 2025

Loews Philadelphia



ASPO

*American Society of
Preventive Oncology*